

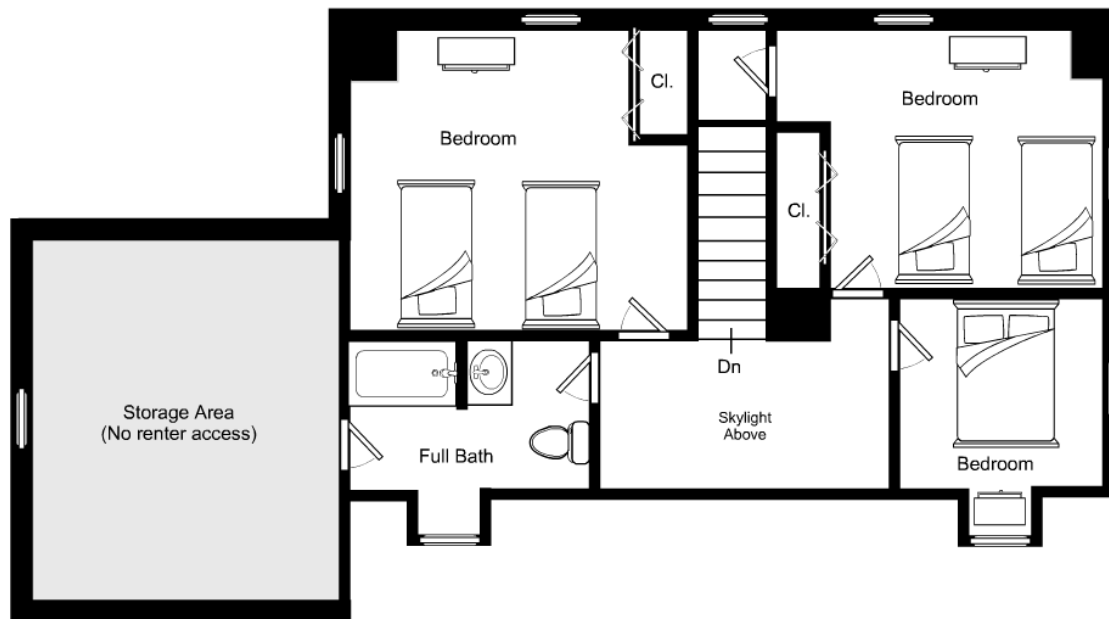
1/8" = 1'-0"
 L = 12"

Old Mill Road / First Floor

Listing no. 20100307M1


BostonVirtualImaging
 LLC

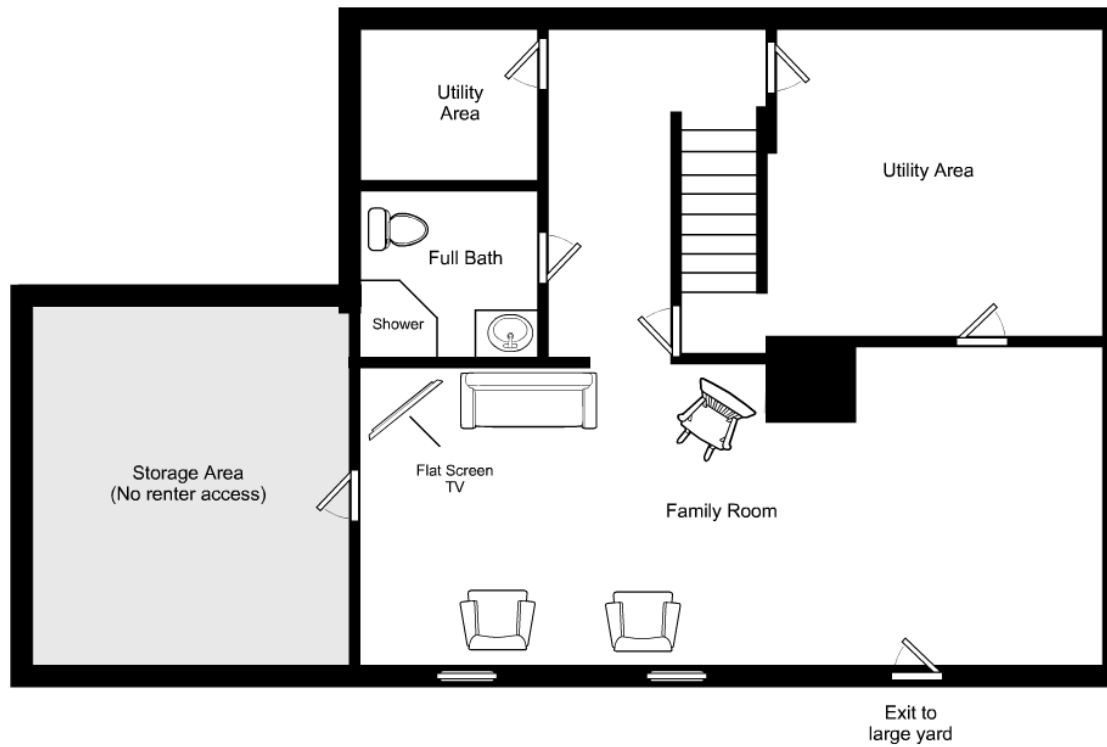
powered by Icovia®



1/8" = 1'-0"
 └─ = 12"

Old Mill Road / Second Floor

Listing no. 20100307M1



1/8" = 1'-0"
└─ = 12"

Old Mill Road / Lower Level

Listing no. 20100307M1