

| LEGEND | |
|--------|-------------------------|
| | CATCH BASIN |
| | DRAIN MANHOLE |
| | DRAIN LINE |
| | SEWER MANHOLE |
| | SEWER LINE |
| | WATER LINE |
| | WATER VALVE |
| | HYDRANT |
| | WATER HAND HOLE |
| | TREE (DECIDUOUS) / SIZE |
| | TREE (PINE) / SIZE |
| | VGC |
| | VERTICAL GRANITE CURB |
| | MANHOLE |
| | LANDSCAPED |
| | STONE WALL |
| | MAJOR CONTOUR |
| | MINOR CONTOUR |
| | SPOT ELEVATION |
| | GAS VALVE |
| | UTILITY POLE |
| | OVERHEAD ELECTRIC |
| | A.C. UNIT |
| | ELECTRIC MANHOLE |
| | TREE LINE |
| | CHAINLINK FENCE |
| | WIRE FENCE |
| | WOOD FENCE |
| | MAILBOX |
| | LIGHT POLE |
| | ELECTRIC HAND HOLE |

PLAN REFERENCES:
1.) Plan Book: 427 Plan 48 of 1995

NOTES:
1.) UNDERGROUND FEATURES HAVE BEEN COMPILED, IN PART, BASED UPON INFORMATION FURNISHED BY OTHERS. THIS INFORMATION IS TO BE CONSIDERED APPROXIMATE AND KELLY ENGINEERING GROUP, INC. DOES NOT TAKE RESPONSIBILITY FOR SUBSEQUENT ERRORS OR OMISSIONS WHICH MAY HAVE BEEN INCORPORATED INTO THIS PLAN AS A RESULT. ADDITIONALLY, OTHER SUCH FEATURES MAY EXIST ON THE SITE, THE EXISTENCE OF WHICH ARE UNKNOWN TO KELLY ENGINEERING GROUP, INC. THE SIZE, LOCATION, AND EXISTENCE OF ALL SUCH FEATURES MUST BE VERIFIED BY THE APPROPRIATE AUTHORITIES PRIOR TO CONSTRUCTION.
3.) THE SITE DETAIL AND SURFACE IMPROVEMENTS DEPICTED WERE OBTAINED BY A FIELD SURVEY OF THE PROPERTY UPDATED IN SEPTEMBER OF 2017 BY KELLY ENGINEERING GROUP, INC.
4.) THE ELEVATIONS SHOWN HEREON ARE BASED ON.....

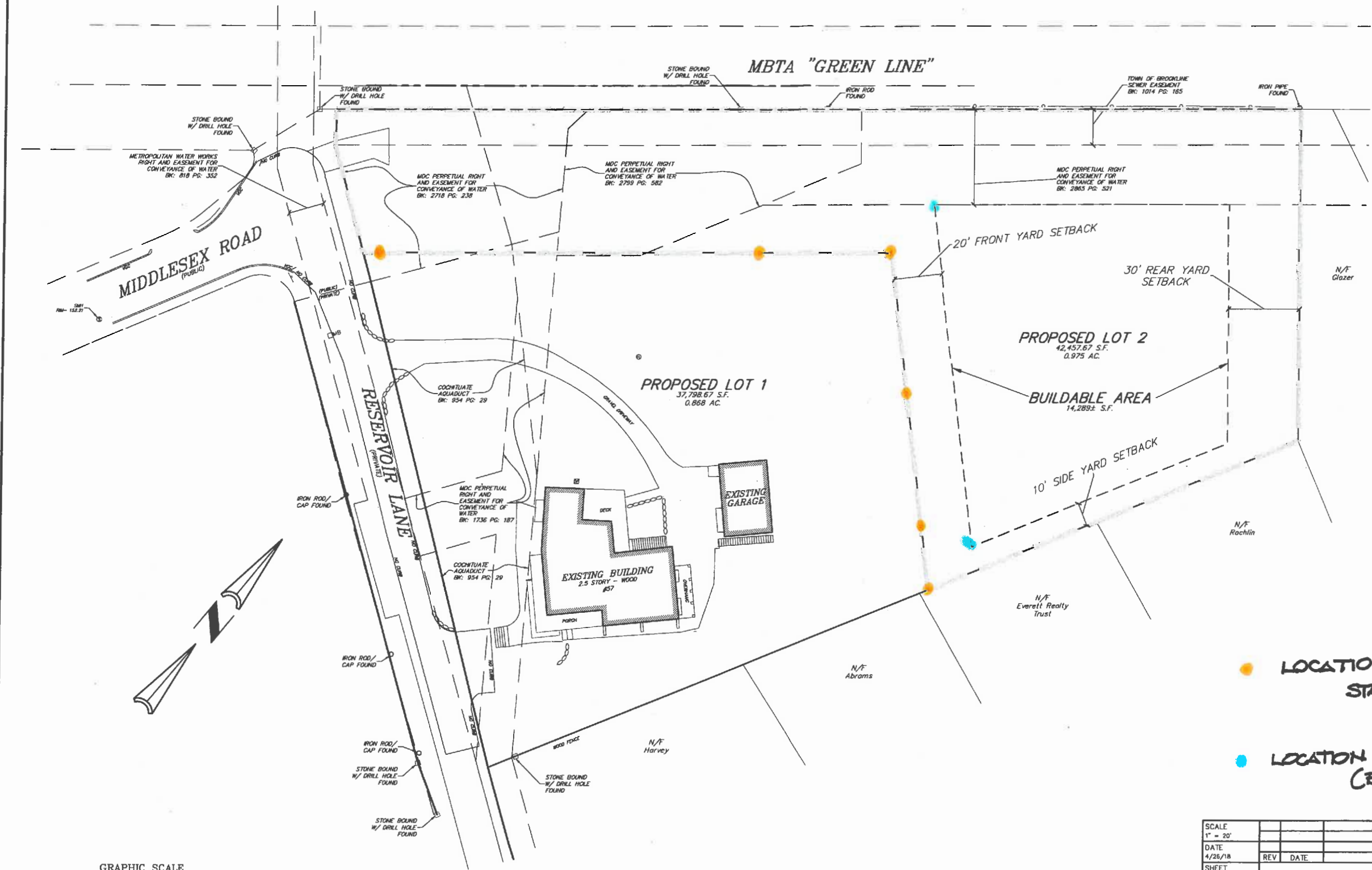
| | | | | |
|--|-----|------|----------|----------------|
| SCALE 1" = 20' | | | | |
| DATE 10/11/17 | REV | DATE | REVISION | BY |
| SHEET 1 OF 1 | | | | |
| PLAN NO. 2017-067-SU00 | | | | |
| DISK REF NO. F:\P\2017-067 | | | | |
| DRAWN BY JPM | | | | |
| CHKD BY SMH | | | | |
| APPD BY SMH | | | | |
| 57 RESERVOIR LANE BROOKLINE, MASSACHUSETTS EXISTING CONDITIONS PLAN | | | | SHEET NO. 1 |
| KELLY ENGINEERING GROUP, INC. CIVIL ENGINEERING CONSULTANTS 0 CAMPANELLI DRIVE • BRAintree MA • 02184 PHONE: 781 843 4333 FAX: 781 843 0028 | | | | |

GRAPHIC SCALE
(IN FEET)
1 inch = 20 ft.

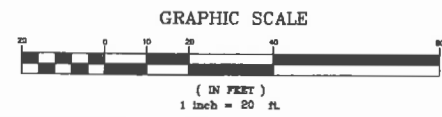
KELLY ENGINEERING GROUP SHALL NOT BE RESPONSIBLE FOR CONSTRUCTION MEANS, METHODS, TECHNIQUES, OR PROCEDURES UTILIZED BY THE CONTRACTOR, NOR FOR THE SAFETY OF PUBLIC OR CONTRACTOR'S EMPLOYEES, OR FOR THE FAILURE OF THE CONTRACTOR TO CARRY OUT THE WORKING ACCORDANCE WITH THE CONTRACT DOCUMENTS.
THE EXTENT OF KELLY ENGINEERING GROUP'S LIABILITY FOR THIS PLAN IS LIMITED TO THE EXTENT OF ITS FEE LESS THIRD PARTY COST

COPYRIGHT (c) by KELLY ENGINEERING GROUP, INC.
All Rights Reserved

NO PART OF THIS DOCUMENT MAY BE REPRODUCED, STORED IN A RETRIEVAL SYSTEM, OR TRANSMITTED IN ANY FORM OR BY ANY MEANS, ELECTRONIC, MECHANICAL, PHOTOCOPYING, RECORDING OR OTHERWISE, WITHOUT THE PRIOR WRITTEN PERMISSION OF KELLY ENGINEERING GROUP. ANY VIOLATION OF THIS DOCUMENT, WITHOUT THE WRITTEN PERMISSION OF KELLY ENGINEERING GROUP, SHALL RENDER IT VOID AND UNENFORCEABLE.



- LOCATION OF ORANGE STAKES (LOT BOUNDS)
- LOCATION OF BLUE STAKES (BUILDABLE AREA)



KELLY ENGINEERING GROUP SHALL NOT BE RESPONSIBLE FOR CONSTRUCTION MEANS, METHODS, MATERIALS, OR PROCEDURES UTILIZED BY THE CONTRACTOR, NOR FOR THE SAFETY OF ANY PERSONS OR PROPERTY EMPLOYED, OR FOR THE FAILURE OF THE CONTRACTOR TO CARRY OUT THE WORK ACCORDING TO THE CONTRACT DOCUMENTS. THE DESIGN OF KELLY ENGINEERING GROUP SHALL BE LIMITED TO THE EXTENT OF ITS PROFESSIONAL LIABILITY.

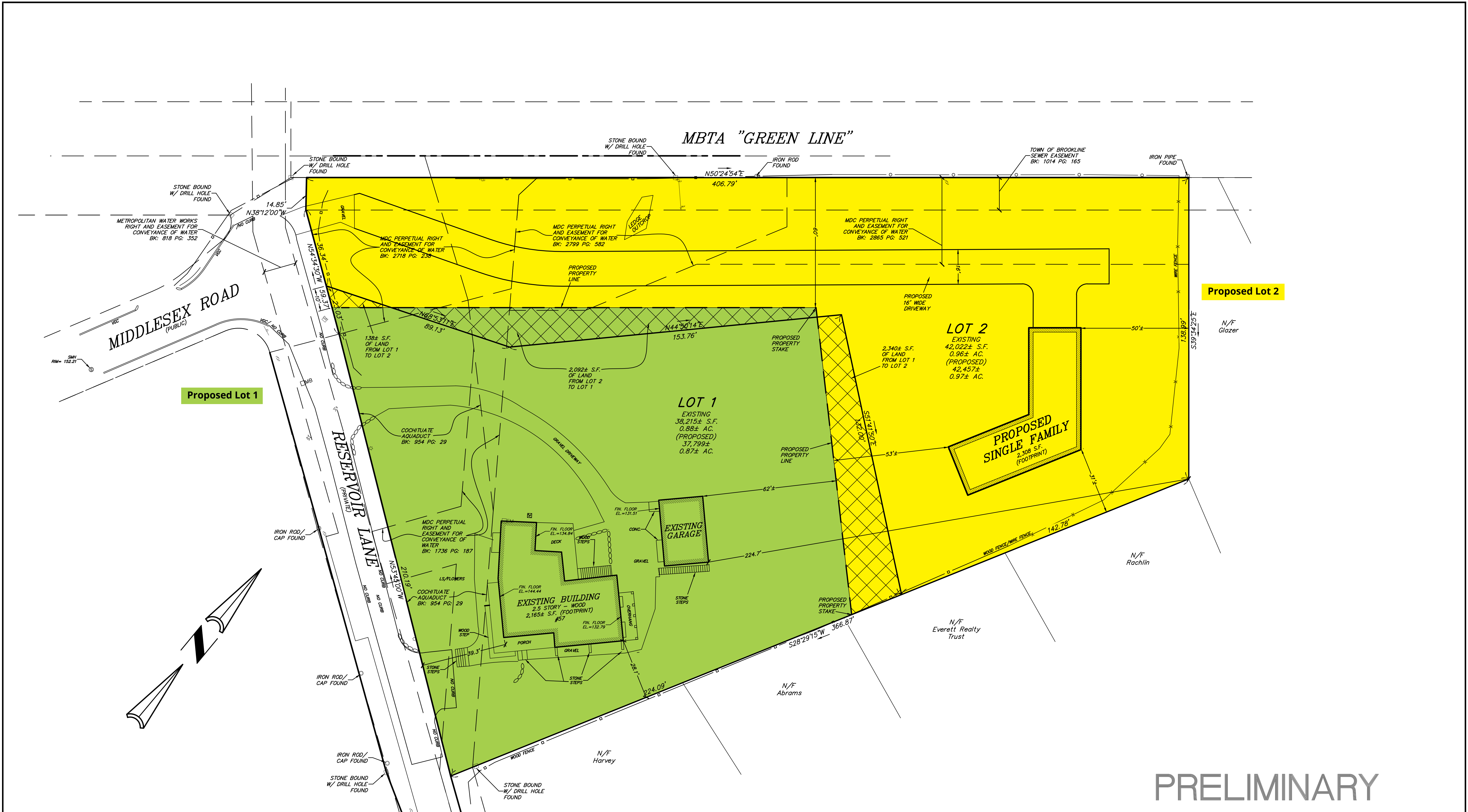
COPYRIGHT (C) by KELLY ENGINEERING GROUP, INC.
All Rights Reserved

NO PART OF THIS DOCUMENT MAY BE REPRODUCED, STORED IN A RETRIEVAL SYSTEM, OR TRANSMITTED IN ANY FORM OR BY ANY MEANS, ELECTRONIC, MECHANICAL, PHOTOCOPYING, RECORDING OR OTHERWISE, WITHOUT THE PRIOR WRITTEN PERMISSION OF KELLY ENGINEERING GROUP. ANY VIOLATION OF THIS DOCUMENT SHALL BE SUBJECT TO THE PENALTIES OF THE MASSACHUSETTS PROFESSIONAL ENGINEERING ACT, CHAPTER 26B, SECTION 27B.

S-10 ZONING DISTRICT
MAX. FAR = 0.3 OF LOT AREA

| | | | | |
|---|-----|------|----------|-----------|
| SCALE 1" = 20' | | | | |
| DATE 4/26/18 | REV | DATE | REVISION | BY |
| SHEET 1 OF 1 | | | | |
| PLAN NO. 2017-067-MDD | | | | |
| DISK REF. NO. F:\V\2017-067 | | | | |
| DRAWN BY JPM | | | | |
| CHKD BY SMH | | | | |
| APPD BY SMH | | | | |
| 57 RESERVOIR LANE BROOKLINE, MASSACHUSETTS | | | | SHEET NO. |
| BUILDABLE AREA PLAN | | | | 1 |
| KELLY ENGINEERING GROUP, INC. CIVIL ENGINEERING CONSULTANTS 8 CAMPANELLI DRIVE • BRAINTREE, MA • 02184 PHONE: 781 843 4333 FAX: 781 843 0028 | | | | |

REVISED 5/29/18



PRELIMINARY

| | | | | | | | |
|--|--|-------------------------------|--|---|------|----------|----|
| <p>STONE BOUND W/ DRILL HOLE FOUND</p> | | SCALE 1" = 20' | | | | | |
| | | DATE 10/30/17 | | REV | DATE | REVISION | BY |
| | | SHEET 1 OF 1 | | 57 RESERVOIR LANE BROOKLINE, MASSACHUSETTS APPROVAL NOT REQUIRED PLAN | | | |
| | | PLAN NO. 2017-067-LA00 | | | | | |
| | | DISK REF NO. F:\P\2017-067 | |  KELLY ENGINEERING GROUP, INC. CIVIL ENGINEERING CONSULTANTS 0 CAMPANELLI DRIVE • BRAINTREE MA • 02184 PHONE: 781 843 4333 FAX: 781 843 0028 | | | |
| | | DRAWN BY JPM | | | | | |
| | | CHKD BY SMH | | | | | |
| | | APPD BY SMH | | SHEET NO. 1 | | | |
| | | | | | | | |

GRAPHIC SCALE

20 0 10 20 40 80

(IN FEET)

1 inch = 20 ft.

KELLY ENGINEERING GROUP SHALL NOT BE RESPONSIBLE FOR CONSTRUCTION MEANS, METHODS, TECHNIQUES, OR PROCEDURES UTILIZED BY THE CONTRACTOR, NOR FOR THE SAFETY OF PUBLIC OR CONTRACTOR'S EMPLOYEES; OR FOR THE FAILURE OF THE CONTRACTOR TO CARRY OUT THE WORKING ACCORDANCE WITH THE CONTRACT DOCUMENTS.
THE EXTENT OF KELLY ENGINEERING GROUP'S LIABILITY FOR THIS PLAN IS LIMITED TO THE EXTENT OF ITS FEE LESS THIRD PARTY COST.

COPYRIGHT (C) by KELLY ENGINEERING GROUP, INC.
All Rights Reserved

NO PART OF THIS DOCUMENT MAY BE REPRODUCED, STORED IN A RETRIEVAL SYSTEM, OR TRANSMITTED IN ANY FORM OR BY ANY MEANS, ELECTRONIC, MECHANICAL, PHOTOCOPYING, RECORDING OR OTHERWISE, WITHOUT THE PRIOR WRITTEN PERMISSION OF KELLY ENGINEERING GROUP. ANY VIOLATIONS TO THIS DOCUMENT, WITHOUT THE WRITTEN PERMISSION OF KELLY ENGINEERING GROUP, SHALL BE SUBJECT TO LITIGATION AND PENALTY.