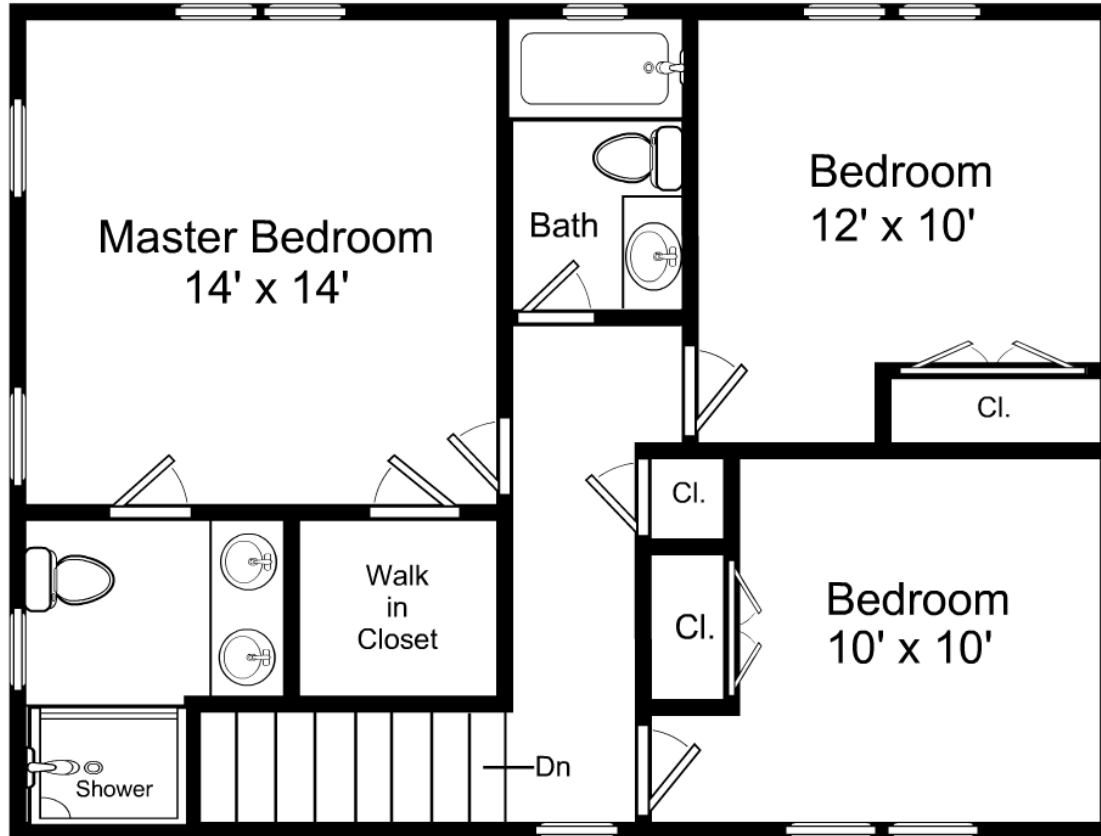


"For visual purposes only. Dimensions are estimates and are not guaranteed."

3/16" = 1'-0"
 ┌─── = 12"

20081006A1 / First Floor

Listing no. 20081006A1

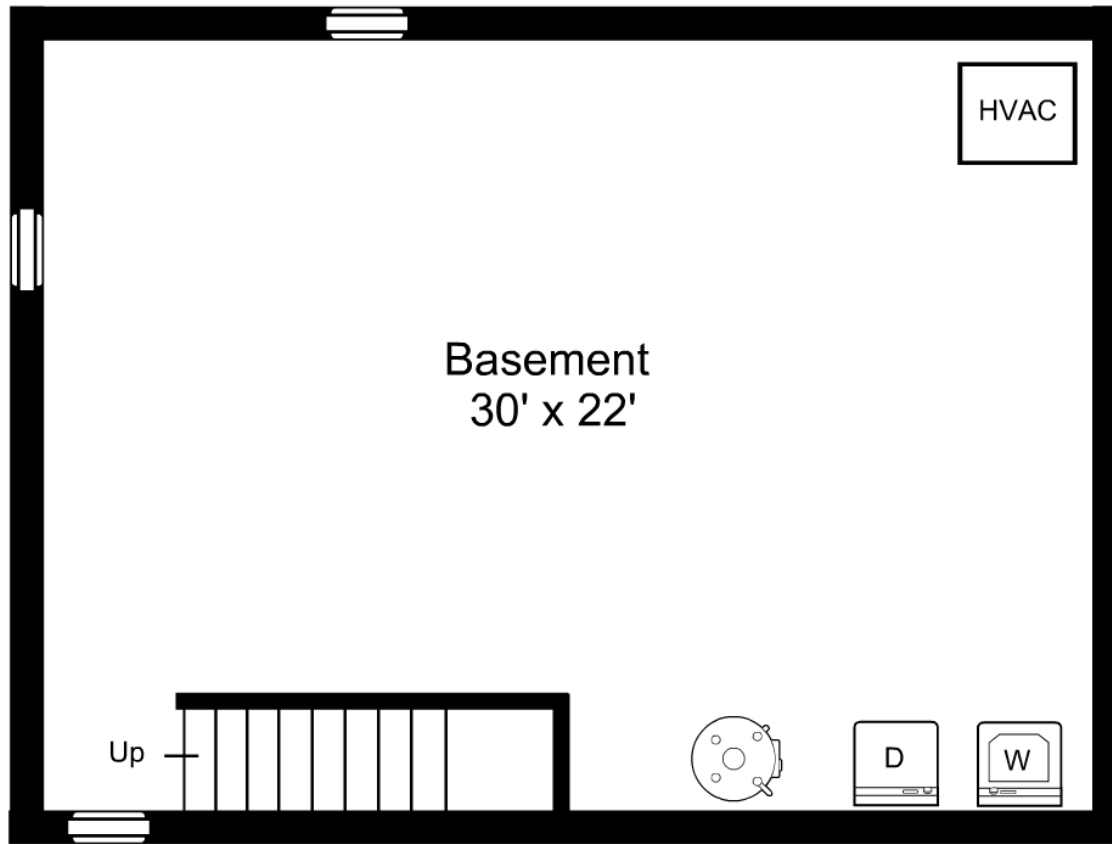


"For visual purposes only. Dimensions are estimates and are not guaranteed."

3/16" = 1'-0"
 — = 12"

20081006A1 / Second Floor

Listing no. 20081006A1



"For visual purposes only. Dimensions are estimates and are not guaranteed."

3/16" = 1'-0"
┌ = 12"

20081006A1 / Basement

Listing no. 20081006A1