

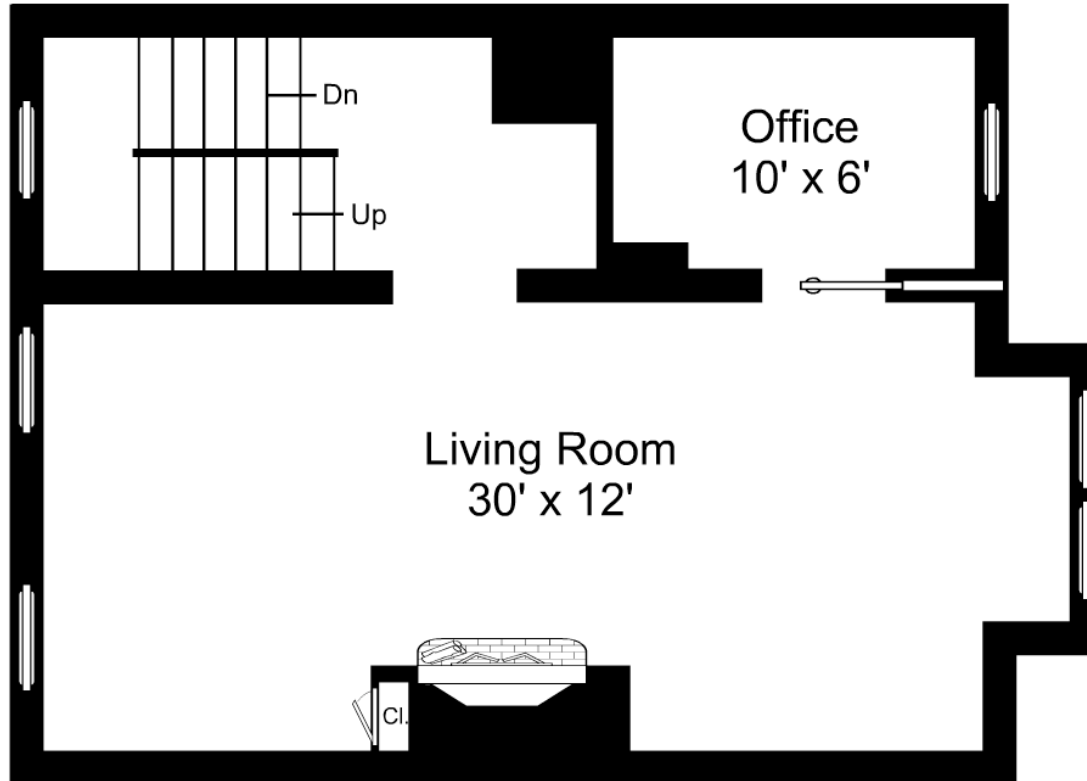
Artistic rendering for visual purposes only. Dimensions are estimates and are not guaranteed.  
 Ceiling 8'-0"



3/16" = 1'-0"  
 — = 12"

## 12 Cumston Street / First Floor

Listing no. 20091102A1



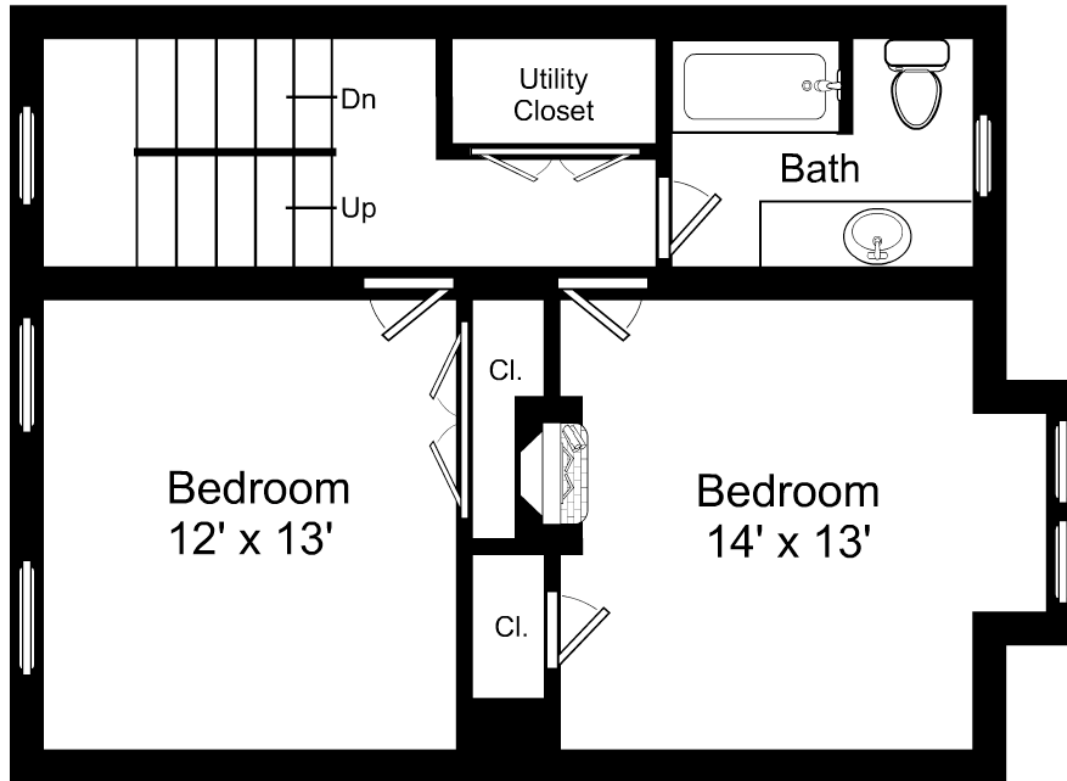
Artistic rendering for visual purposes only. Dimensions are estimates and are not guaranteed.  
Ceiling 9'-6"



3/16" = 1'-0"  
— = 12"

## 12 Cumston Street / Second Floor

Listing no. 20091102A1



Artistic rendering for visual purposes only. Dimensions are estimates and are not guaranteed.  
Ceiling 7'-8"




3/16" = 1'-0"  
— = 12"

## 12 Cumston Street / Third Floor

Listing no. 20091102A1



Artistic rendering for visual purposes only. Dimensions are estimates and are not guaranteed. Ceiling 8'-4" 

3/16" = 1'-0"  
— = 12"

## 12 Cumston Street / Fourth Floor

Listing no. 20091102A1

  
**BostonVirtualImaging**  
LLC

powered by Icovia®