

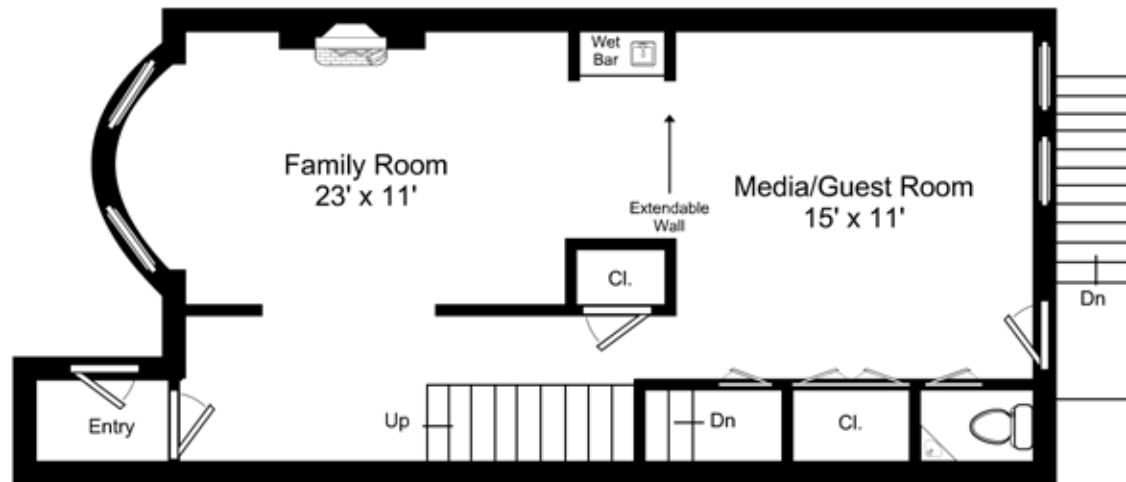


Artistic rendering for visual purposes only. Dimensions are estimates and are not guaranteed.
 Ceiling Height: 8'

1/8" = 1'-0"
 — = 12"

188 West Brookline Street / Garden Level

Listing no. 20130912T1

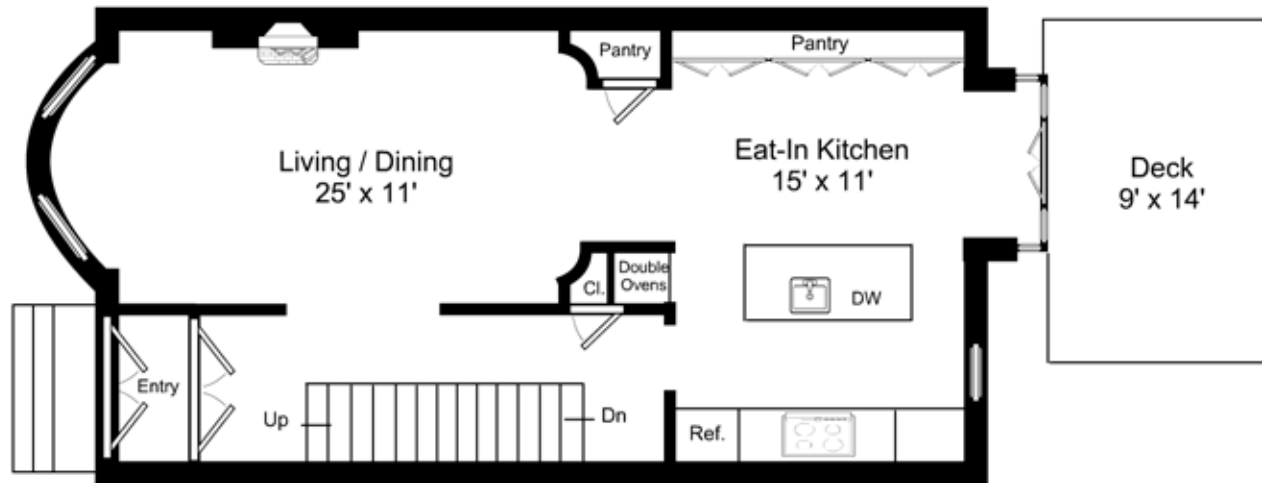


Artistic rendering for visual purposes only. Dimensions are estimates and are not guaranteed.
 Ceiling Height: 8'-1"

1/8" = 1'-0"
 — = 12"

188 West Brookline Street / Street Level

Listing no. 20130912T1



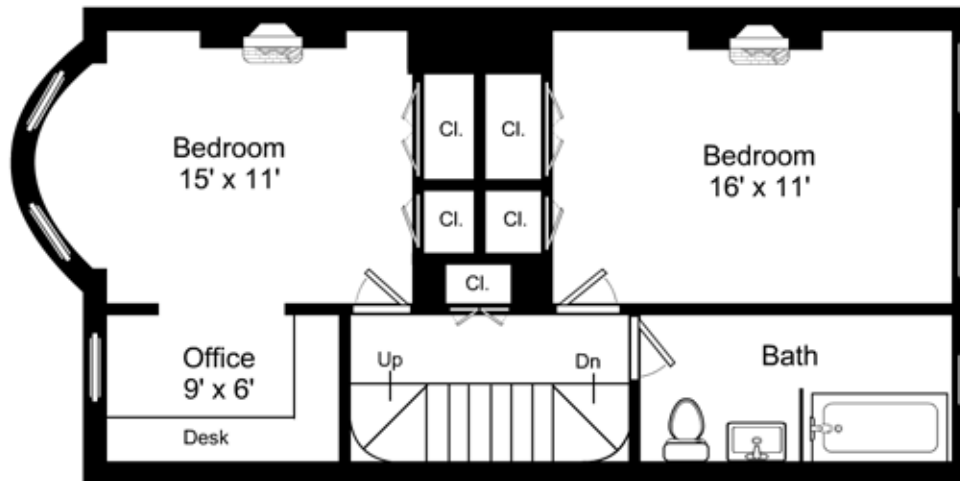
Artistic rendering for visual purposes only. Dimensions are estimates and are not guaranteed.
 Ceiling Height: 10'-7"



Not to scale
 1" = 12"

188 West Brookline Street / Parlor Level

Listing no. 20130912T1



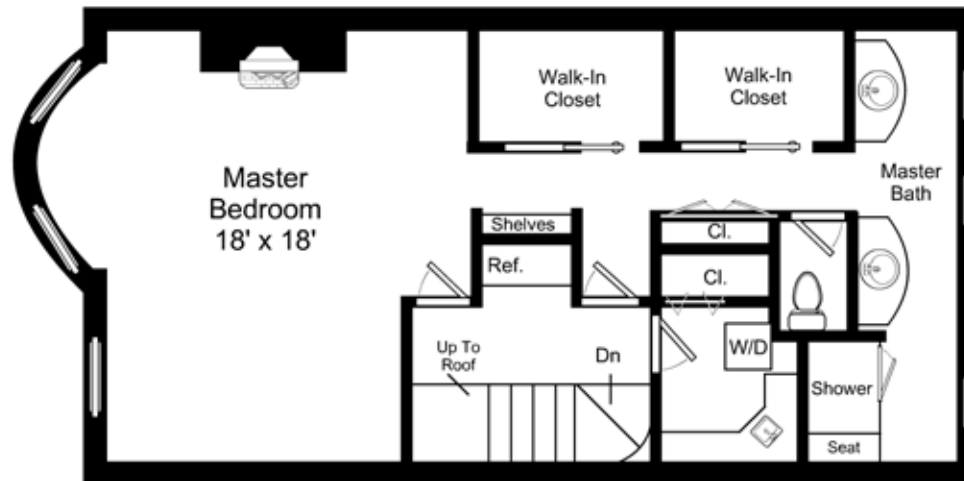
Artistic rendering for visual purposes only. Dimensions are estimates and are not guaranteed.
 Ceiling Height: 9'-3"



1/8" = 1'-0"
 — = 12"

188 West Brookline Street / Third Floor

Listing no. 20130912T1



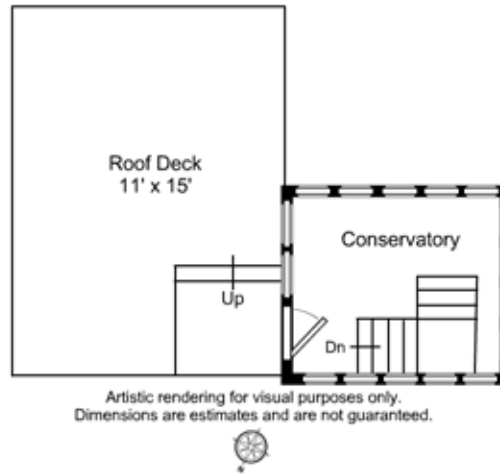
Artistic rendering for visual purposes only. Dimensions are estimates and are not guaranteed.
 Ceiling Height: 8'-9"



1/8" = 1'-0"
 — = 12"

188 West Brookline Street / Master Suite

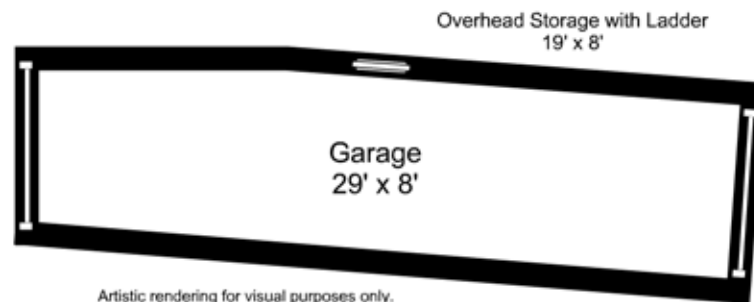
Listing no. 20130912T1



1/8" = 1'-0"
┌ = 12"

188 West Brookline Street / Roof Deck

Listing no. 20130912T1



Artistic rendering for visual purposes only.
Dimensions are estimates and are not guaranteed.

1/8" = 1'-0"
┌ = 12"

188 West Brookline Street / Garage

Listing no. 20130912T1