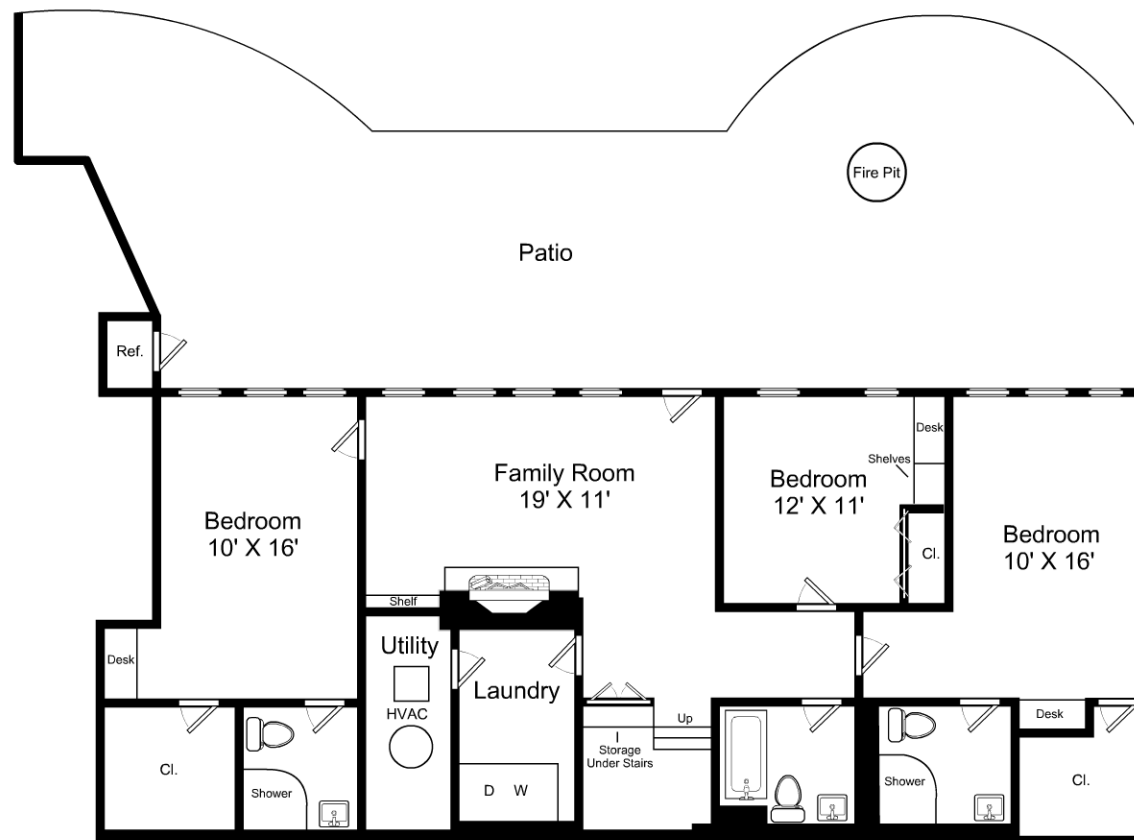


3/32" = 1'-0"
 └─ = 12"

20 Boardman Ave / Main Level

Listing no. 20160317N1



This is an artistic rendering, not a technical drawing.
 Dimensions are estimates and are not guaranteed. May not be to exact scale
 ceiling height: 7' X 7"

3/32" = 1'-0"

— = 12"

20 Boardman Ave / First Floor

Listing no. 20160317N1