

1/16" = 1'-0"
 L = 12"

51 Summer Street / First Floor

Listing no. 20180831S2



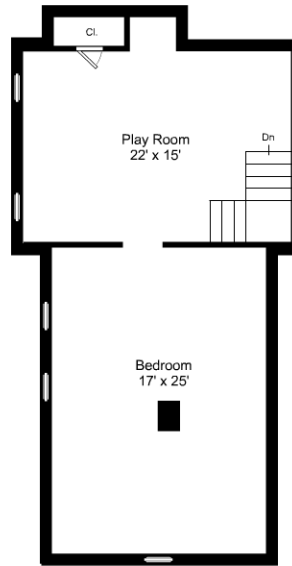


This is an artistic rendering, not a technical drawing. Dimensions are estimates and are not guaranteed. May not be to exact scale.

1/16" = 1'-0"
 L = 12"

51 Summer Street / Second Floor

Listing no. 20180831S2



This is an artistic rendering, not a technical drawing. Dimensions are estimates and are not guaranteed. May not be to exact scale.

1/16" = 1'-0"
┌ = 12"

51 Summer Street / Third Floor

Listing no. 20180831S2