

## 285 Goddard Avenue / First Floor

Listing no. P104272018

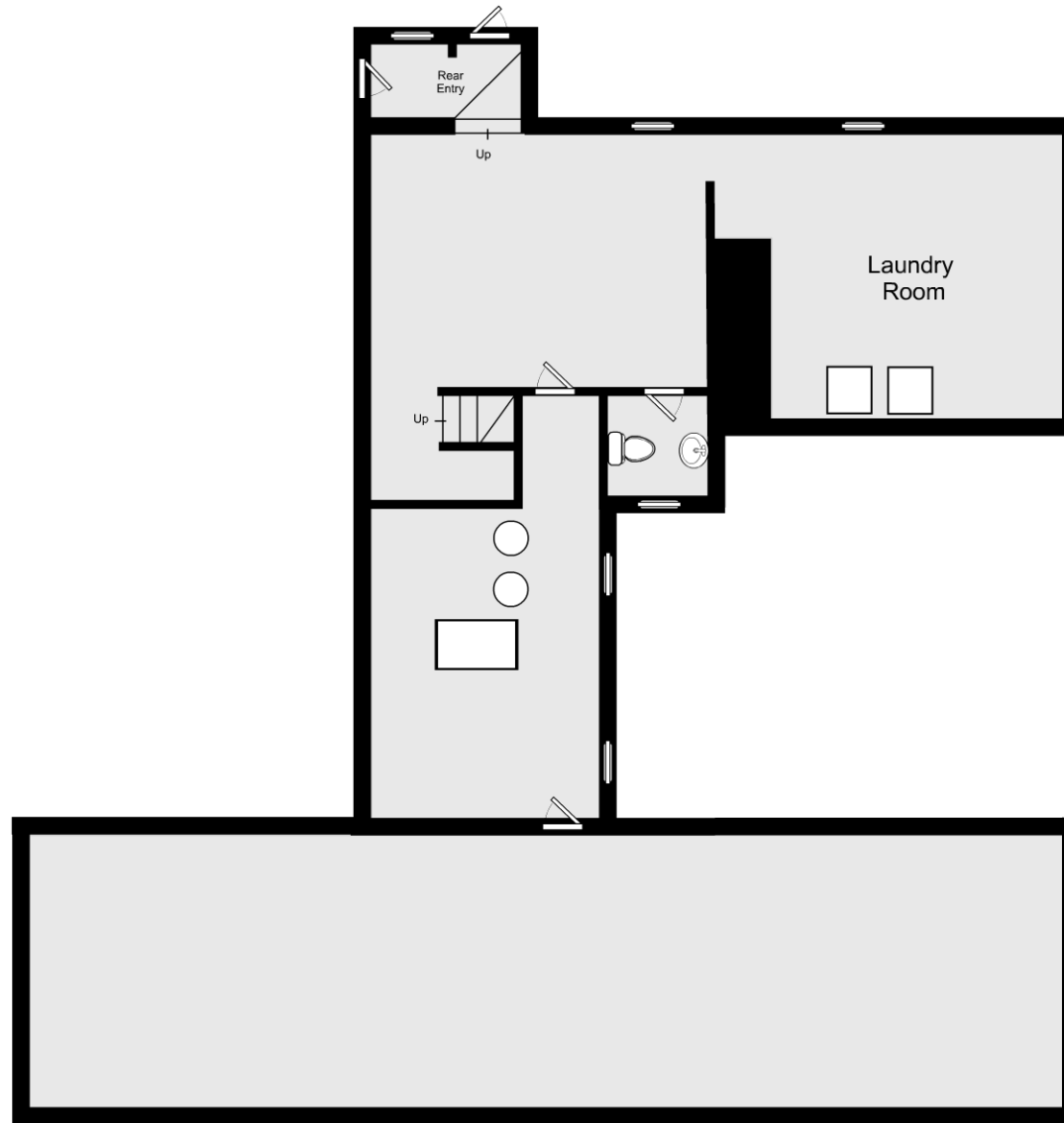


Artistic rendering for visual purposes only. Dimensions are estimates and are not guaranteed. May not be to exact scale.  
 Ceiling Height: 10' 1"

3/32" = 1'-0"  
 L = 12"

## 285 Goddard Avenue / Second Floor

Listing no. P104272018



Artistic rendering for visual purposes only. Dimensions are estimates and are not guaranteed. May not be to exact scale.

3/32" = 1'-0"

— = 12"

## 285 Goddard Avenue / Lower Level

Listing no. P104272018