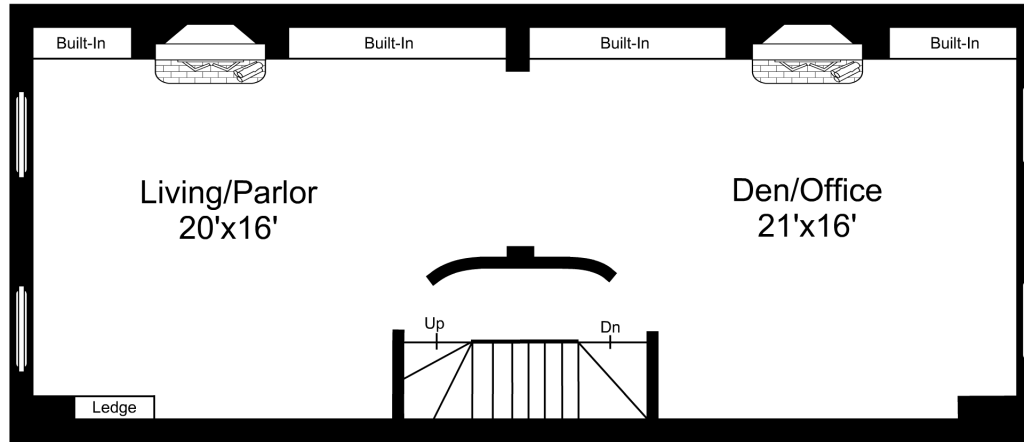


This is an artistic rendering, not a technical drawing. Dimensions are estimates and are not guaranteed. May not be to exact scale.

1/8" = 1'-0"
 └─ = 12"

15 Hancock Street / First Floor

Listing no. 20120514X1

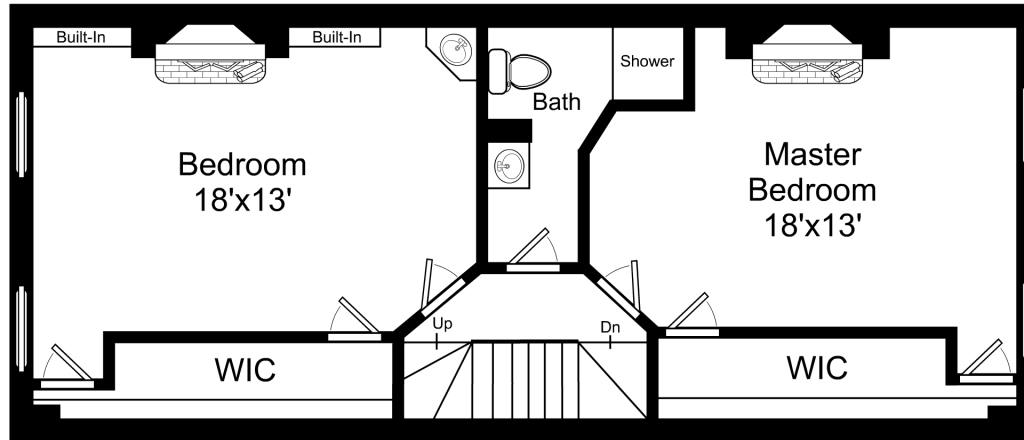


This is an artistic rendering, not a technical drawing. Dimensions are estimates and are not guaranteed. May not be to exact scale.
Ceiling Height 10'

1/8" = 1'-0"
└─ = 12"

15 Hancock Street / Second Floor

Listing no. 20120514X1

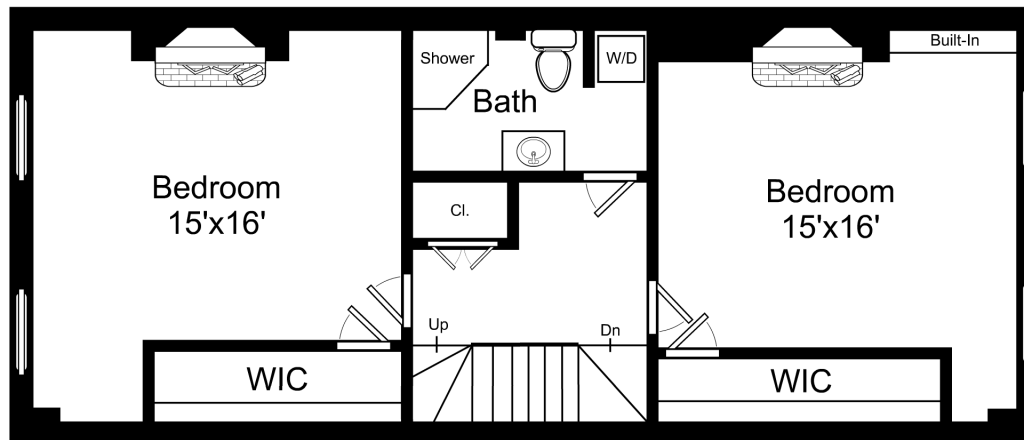


This is an artistic rendering, not a technical drawing. Dimensions are estimates and are not guaranteed. May not be to exact scale.

1/8" = 1'-0"
└─ = 12"

15 Hancock Street / Third Floor

Listing no. 20120514X1

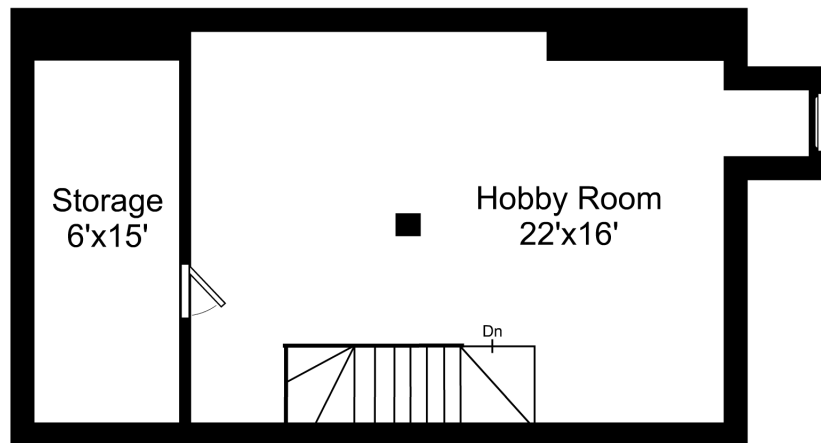


This is an artistic rendering, not a technical drawing. Dimensions are estimates and are not guaranteed. May not be to exact scale.

1/8" = 1'-0"
 └─ = 12"

15 Hancock Street / Fourth Floor

Listing no. 20120514X1

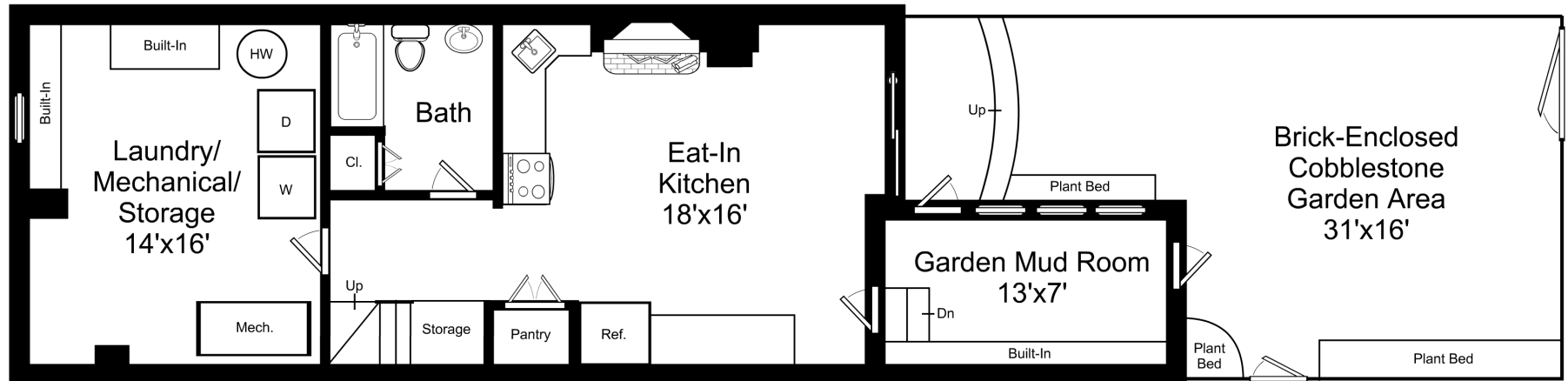


This is an artistic rendering, not a technical drawing. Dimensions are estimates and are not guaranteed. May not be to exact scale.

1/8" = 1'-0"
└─ = 12"

15 Hancock Street / Fifth Floor

Listing no. 20120514X1



1/8" = 1'-0"
 └─ = 12"

15 Hancock Street / Lower Level

Listing no. 20120514X1