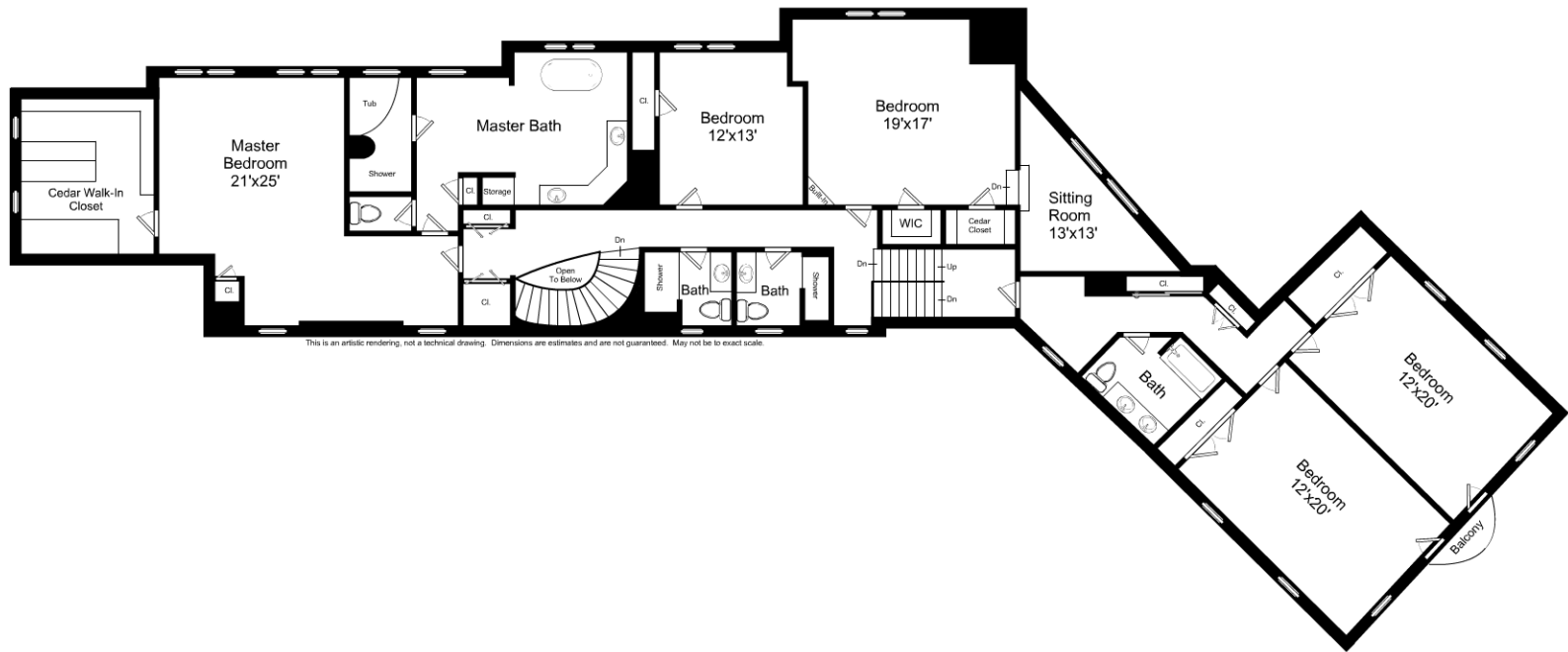


1/16" = 1'-0"  
 L = 12"

## 1031 Brush Hill Road, Milton / First Floor

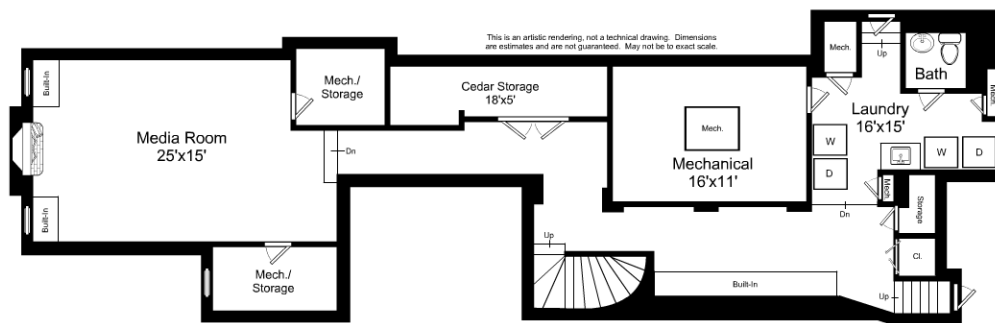
Listing no. 20120821X1



1/16" = 1'-0"  
 L = 12"

## 1031 Brush Hill Road, Milton / Second Floor

Listing no. 20120821X1



1/16" = 1'-0"  
 L = 12"

## 1031 Brush Hill Road, Milton / Lower Level

Listing no. 20120821X1