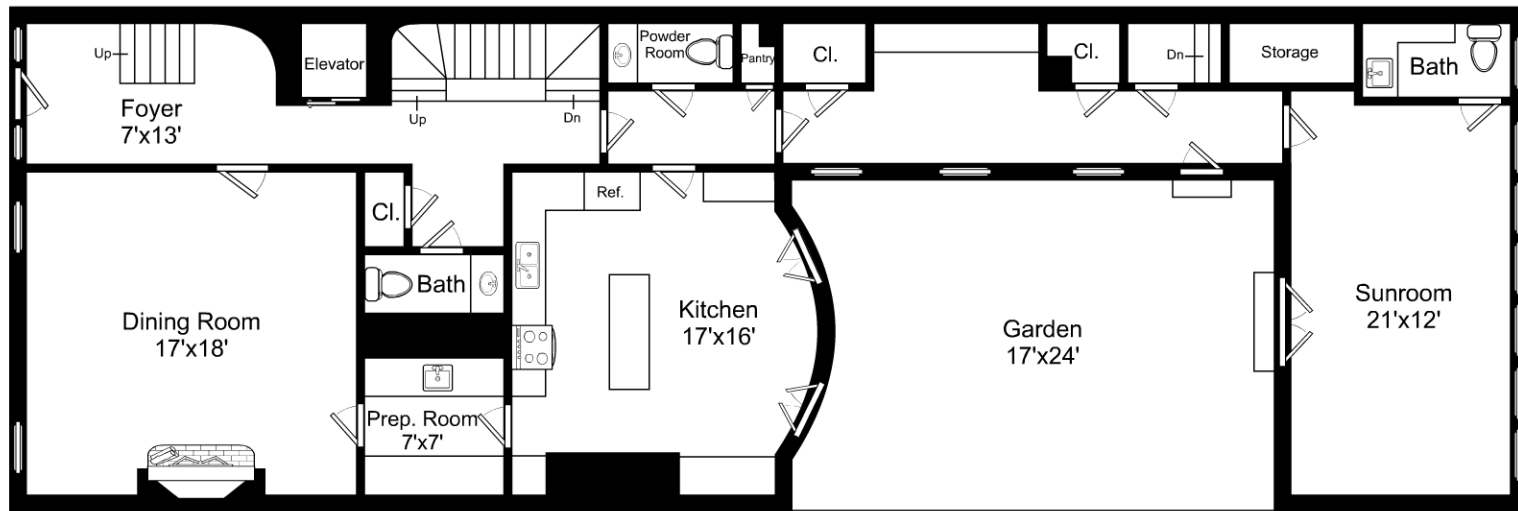


This is an artistic rendering, not a technical drawing. Dimensions are estimates and are not guaranteed.
May not be to exact scale.

3/32" = 1'-0"
1/4" = 12"

22 Chestnut Street / Lower Level

Listing no. 20130104

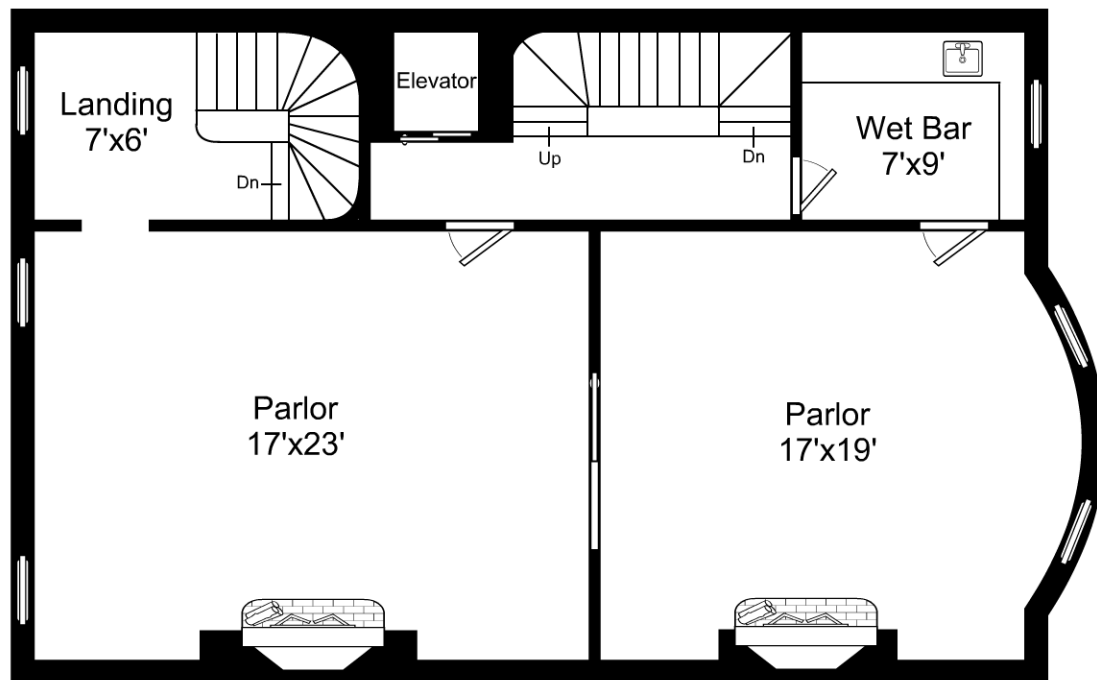


This is an artistic rendering, not a technical drawing. Dimensions are estimates and are not guaranteed.
May not be to exact scale.

3/32" = 1'-0"
└─ = 12"

22 Chestnut Street / First Floor

Listing no. 20130104

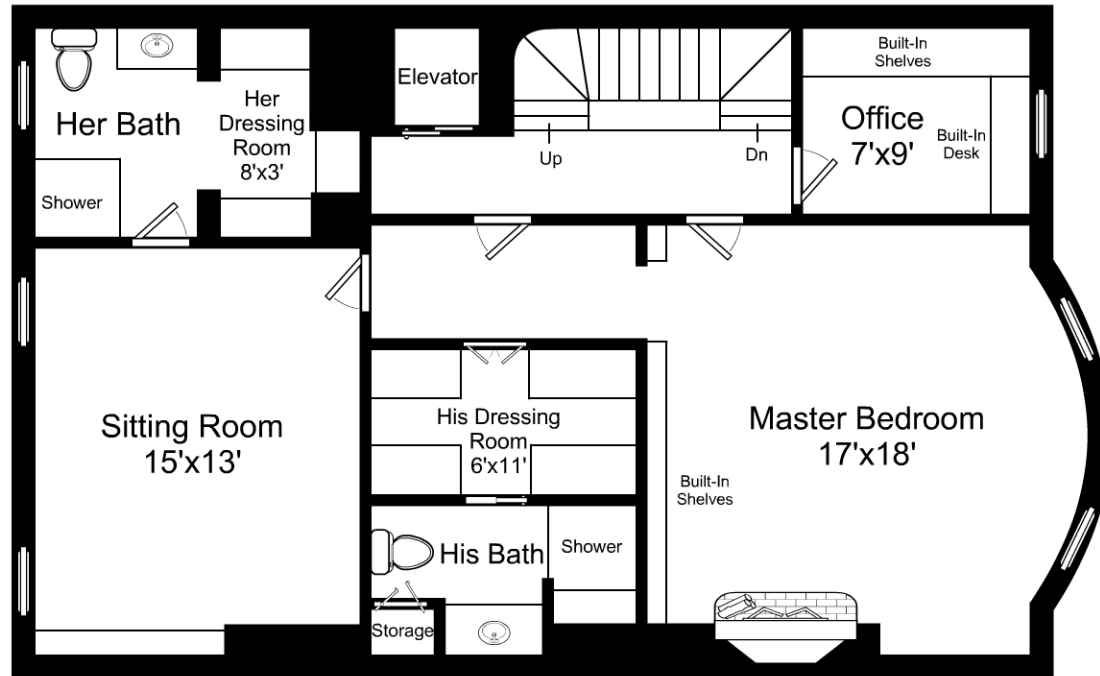


This is an artistic rendering, not a technical drawing. Dimensions are estimates and are not guaranteed.
May not be to exact scale.

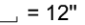
1/8" = 1'-0"
└─ = 12"

22 Chestnut Street / Second Floor

Listing no. 20130104

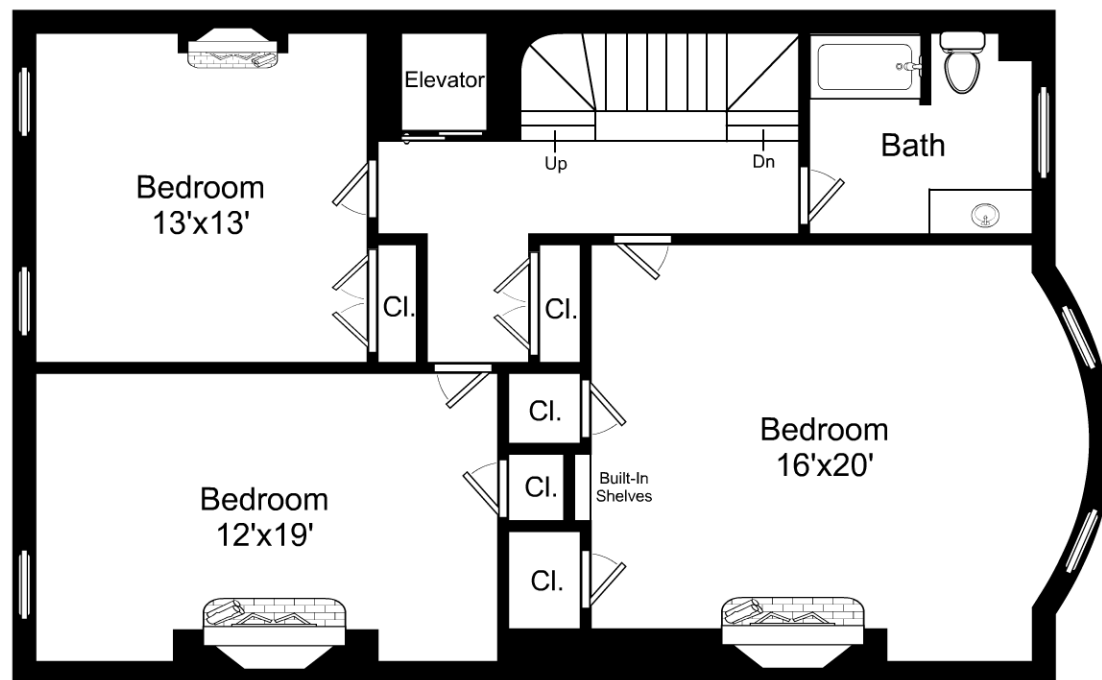


This is an artistic rendering, not a technical drawing. Dimensions are estimates and are not guaranteed.
May not be to exact scale.

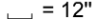
1/8" = 1'-0"
 = 12"

22 Chestnut Street / Third Floor

Listing no. 20130104

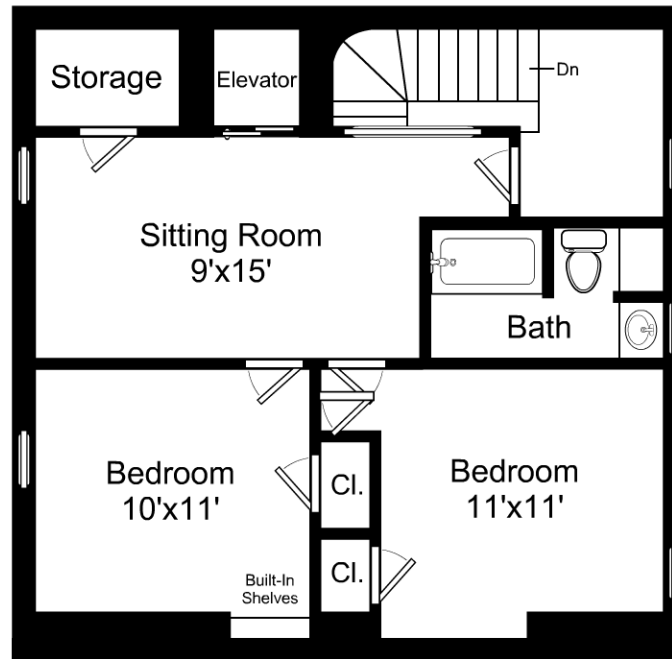


This is an artistic rendering, not a technical drawing. Dimensions are estimates and are not guaranteed.
May not be to exact scale.


1/8" = 1'-0"
 = 12"

22 Chestnut Street / Fourth Floor

Listing no. 20130104



This is an artistic rendering, not a technical drawing. Dimensions are estimates and are not guaranteed.
May not be to exact scale.

1/8" = 1'-0"
 = 12"

22 Chestnut Street / Fifth Floor

Listing no. 20130104