



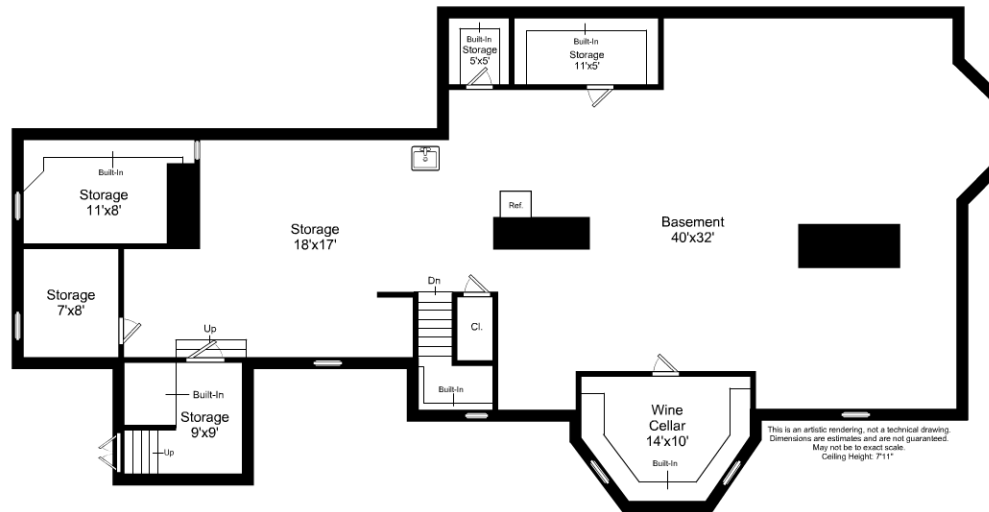


1/16" = 1'-0"  
 — = 12"

## 180 Clyde Street / Main House, Second Floor

Listing no. 20140711B1

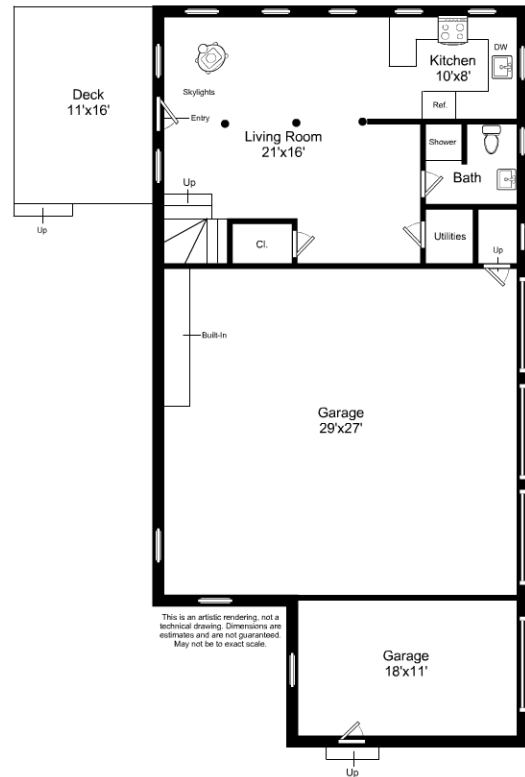




1/16" = 1'-0"  
 L = 12"

## 180 Clyde Street / Main House, Basement

Listing no. 20140711B1

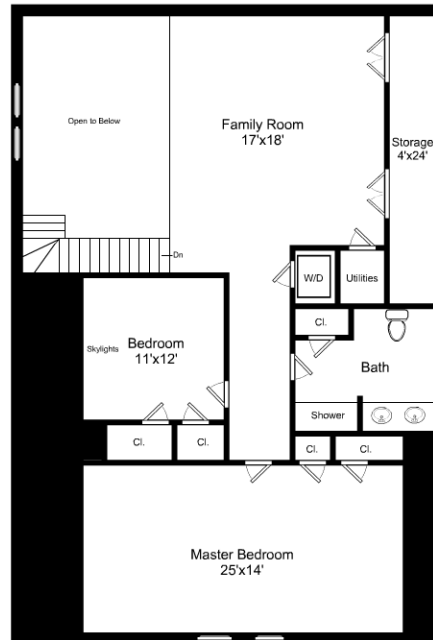


1/16" = 1'-0"

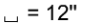
 $\angle = 12''$ 

## 180 Clyde Street / Carriage House, First Floor

Listing no. 20140711B1



This is an artistic rendering, not a technical drawing.  
Dimensions are estimates and are not guaranteed. May not be to exact scale.

1/16" = 1'-0"  
 = 12"

## 180 Clyde Street / Carriage House, Second Floor

Listing no. 20140711B1