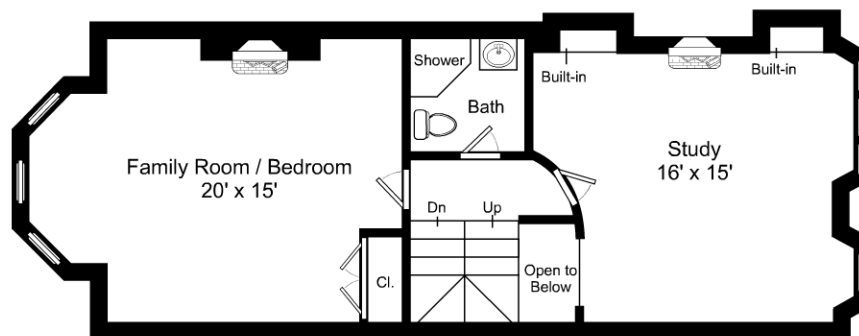


3/32" = 1'-0"  
 ┌ = 12"

## 60 Chestnut Street / First Floor

Listing no. 20150403



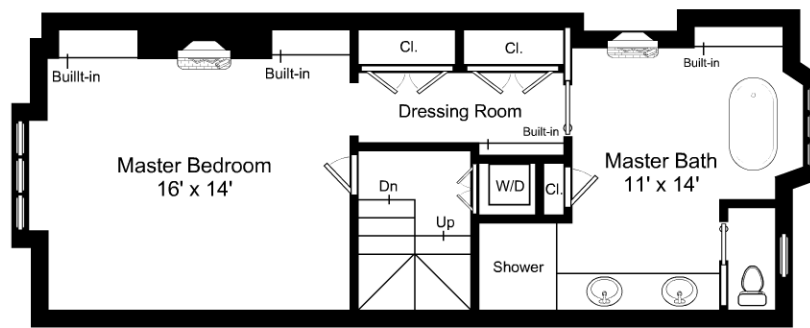
This is an artistic rendering, not a technical drawing. Dimensions are estimations and are not guaranteed.

3/32" = 1'-0"

└─ = 12"

## 60 Chestnut Street / Second Floor

Listing no. 20150403



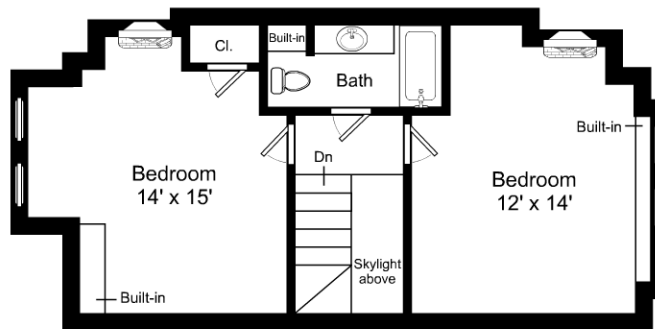
This is an artistic rendering, not a technical drawing. Dimensions are estimations and are not guaranteed.

3/32" = 1'-0"

└ = 12"

## 60 Chestnut Street / Third Floor

Listing no. 20150403



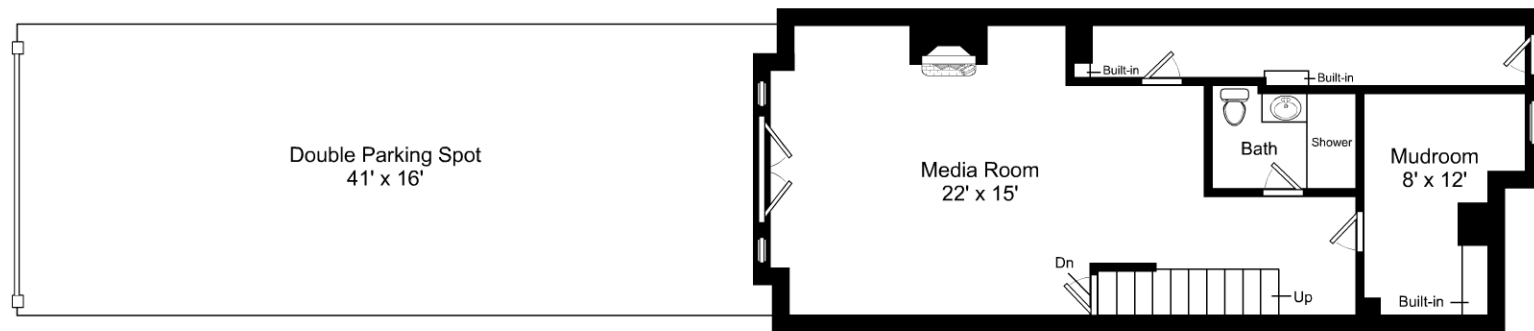
This is an artistic rendering, not a technical drawing. Dimensions are estimations and are not guaranteed.

3/32" = 1'-0"

└─ = 12"

## 60 Chestnut Street / Fourth Floor

Listing no. 20150403



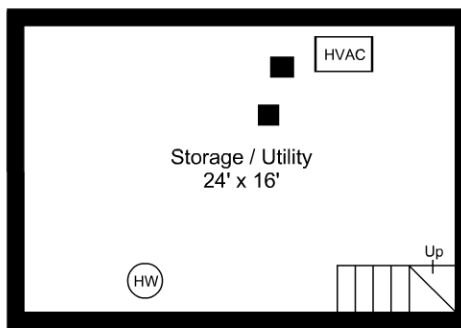
This is an artistic rendering, not a technical drawing. Dimensions are estimations and are not guaranteed.

3/32" = 1'-0"

└ = 12"

## 60 Chestnut Street / Lower Level

Listing no. 20150403



This is an artistic rendering, not a technical drawing. Dimensions are estimations and are not guaranteed.

3/32" = 1'-0"

└─ = 12"

## 60 Chestnut Street / Basement Level

Listing no. 20150403