

This is an artistic rendering, not a technical drawing. Dimensions are estimates and are not guaranteed. May not be to exact scale.

Ceiling Height: 8'4"

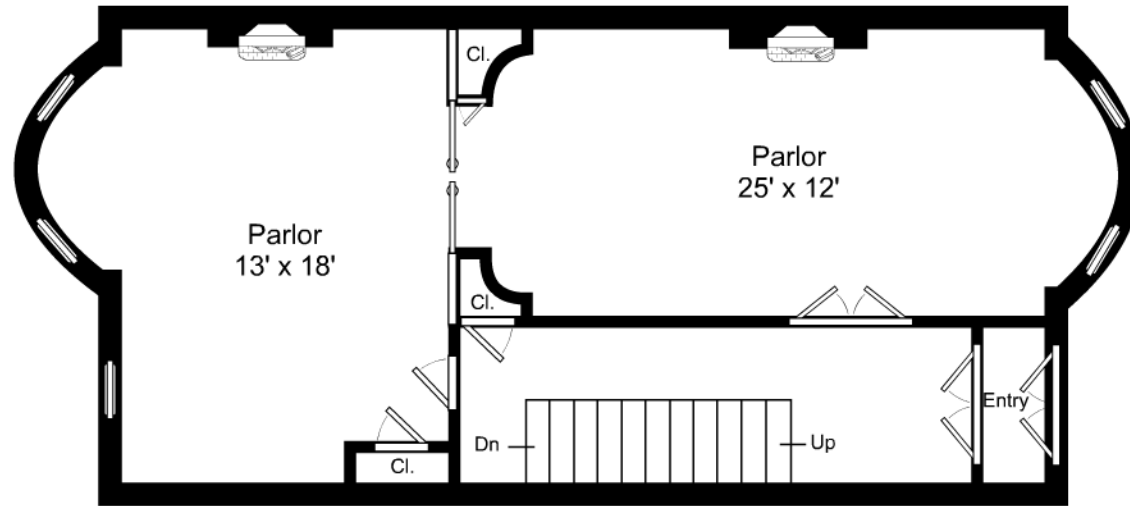


1/8" = 1'-0"

└─ = 12"

## 185 West Brookline Street / Street Level

Listing no. 20150819S1



This is an artistic rendering, not a technical drawing. Dimensions are estimates and are not guaranteed. May not be to exact scale.

Ceiling Height: 11'2"

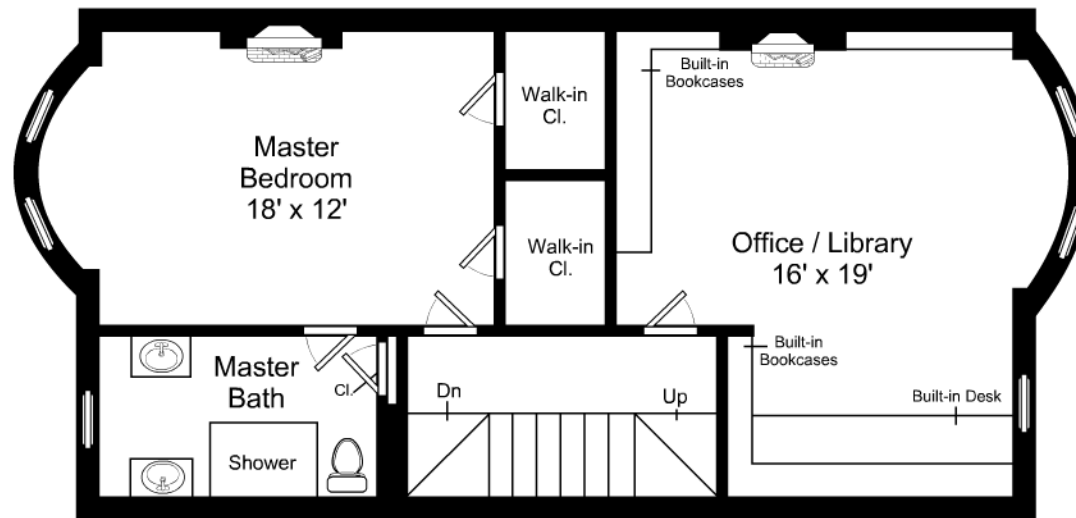


1/8" = 1'-0"

└─ = 12"

## 185 West Brookline Street / Parlor Level

Listing no. 20150819S1



This is an artistic rendering, not a technical drawing. Dimensions are estimates and are not guaranteed. May not be to exact scale.

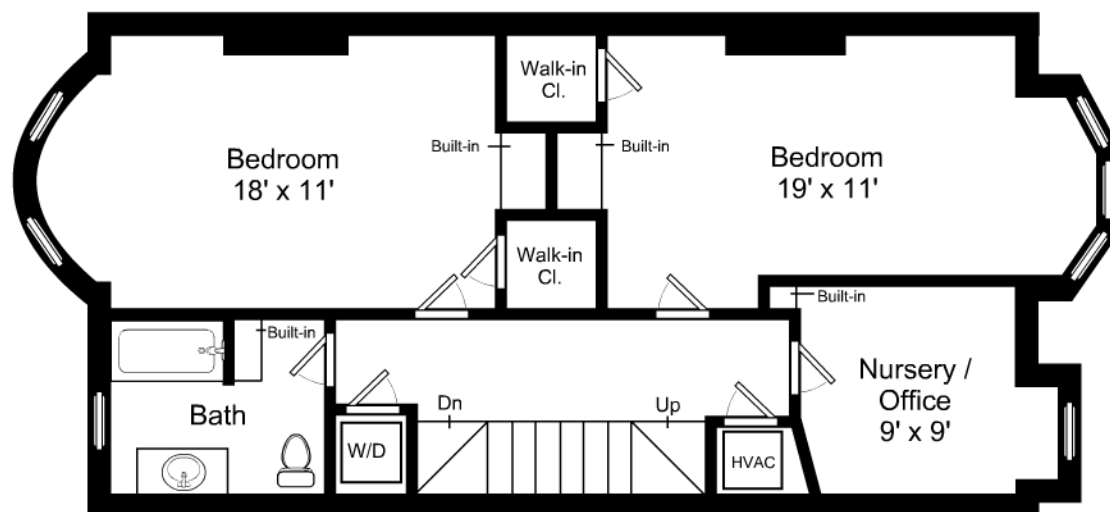
Ceiling Height: 10'2"



1/8" = 1'-0"  
 — = 12"

## 185 West Brookline Street / Second Floor

Listing no. 20150819S1



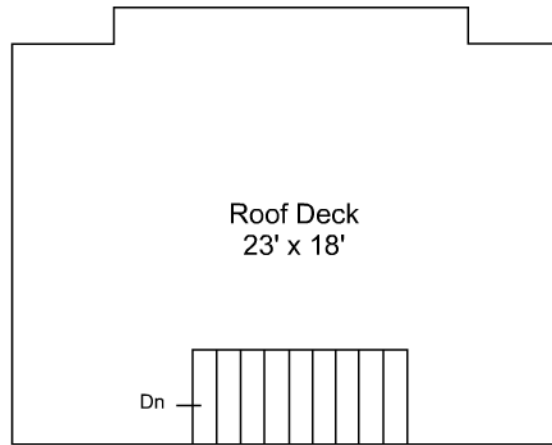
This is an artistic rendering, not a technical drawing. Dimensions are estimates and are not guaranteed. May not be to exact scale.  
Ceiling Height: 8'2"



1/8" = 1'-0"  
└─ = 12"

## 185 West Brookline Street / Third Floor

Listing no. 20150819S1



This is an artistic rendering, not a technical drawing. Dimensions are estimates and are not guaranteed. May not be to exact scale.

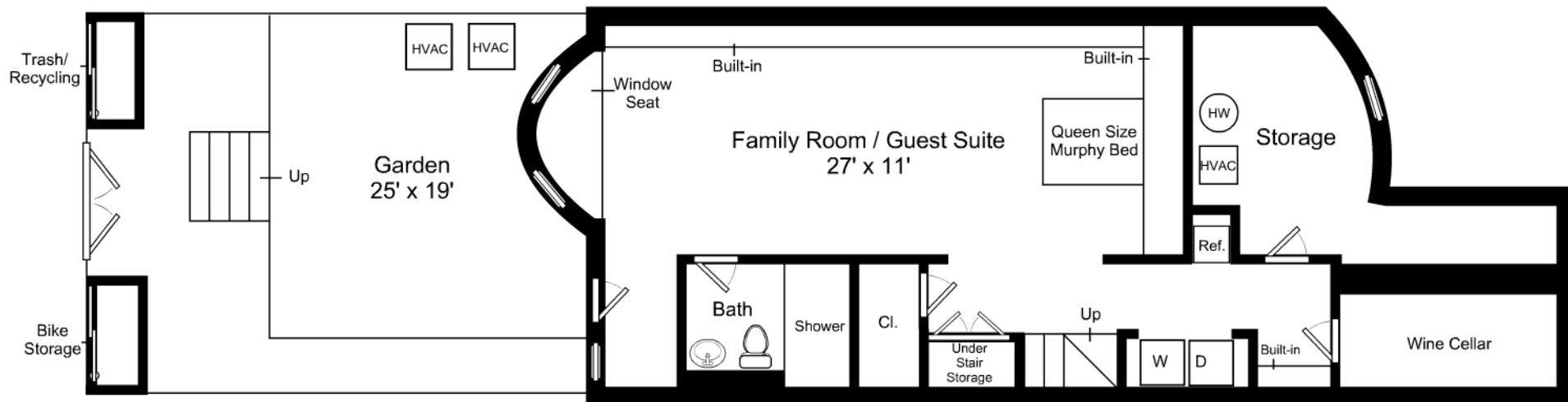


1/8" = 1'-0"

└─ = 12"

## 185 West Brookline Street / Roof Deck

Listing no. 20150819S1



This is an artistic rendering, not a technical drawing. Dimensions are estimates and are not guaranteed. May not be to exact scale.  
Ceiling Height: 8'1"



1/8" = 1'-0"  
— = 12"

## 185 West Brookline Street / Garden Level

Listing no. 20150819S1