

3/32" = 1'-0"

└─ = 12"

336 Newtonville Avenue / First Floor

Listing no. 20151110S1

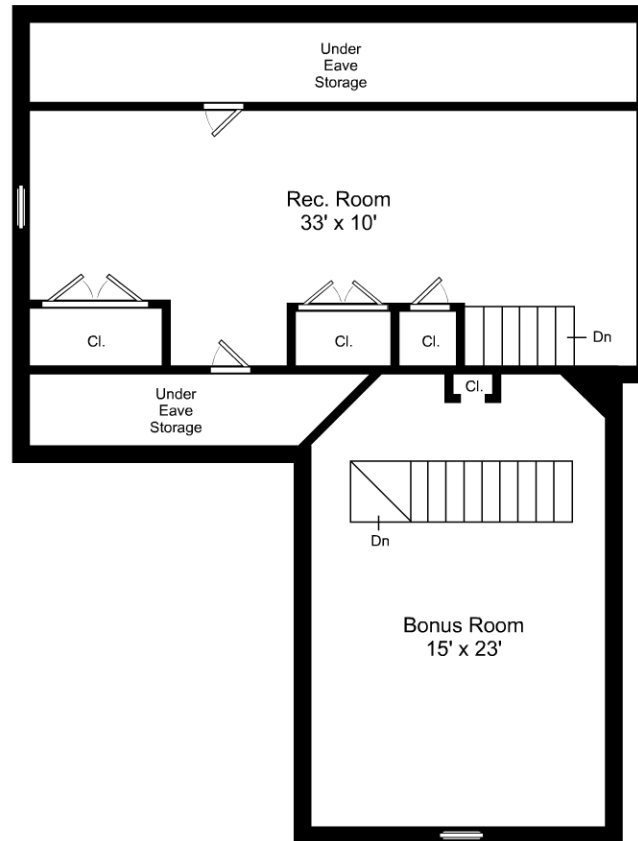


This is an artistic rendering, not a technical drawing. Dimensions are estimates and are not guaranteed. May not be to exact scale.

3/32" = 1'-0"
 — = 12"

336 Newtonville Avenue / Second Floor

Listing no. 20151110S1



This is an artistic rendering, not a technical drawing. Dimensions are estimates and are not guaranteed. May not be to exact scale.

3/32" = 1'-0"
 └─ = 12"

336 Newtonville Avenue / Third Floor

Listing no. 20151110S1