

This is an artistic rendering, not a technical drawing. Dimensions are estimates and are not guaranteed. May not be to exact scale.

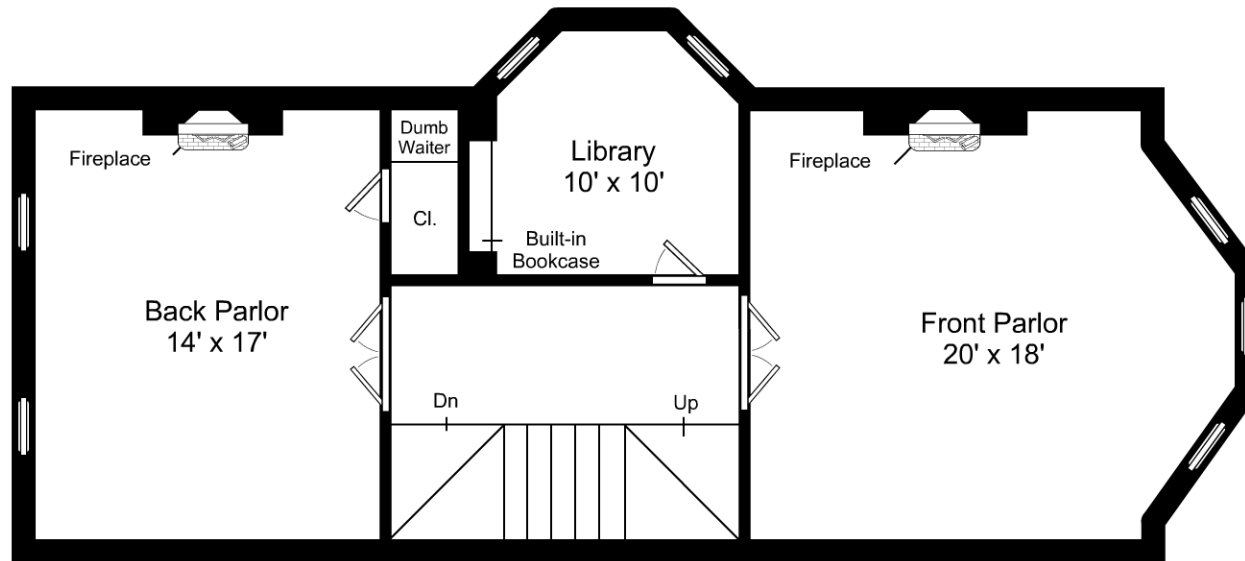
Ceiling Height: 9'11"



1/8" = 1'-0"  
 — = 12"

## 193 West Brookline Street / Street Level

Listing no. 20160302S3



This is an artistic rendering, not a technical drawing. Dimensions are estimates and are not guaranteed. May not be to exact scale.

Ceiling Height: 11'4"

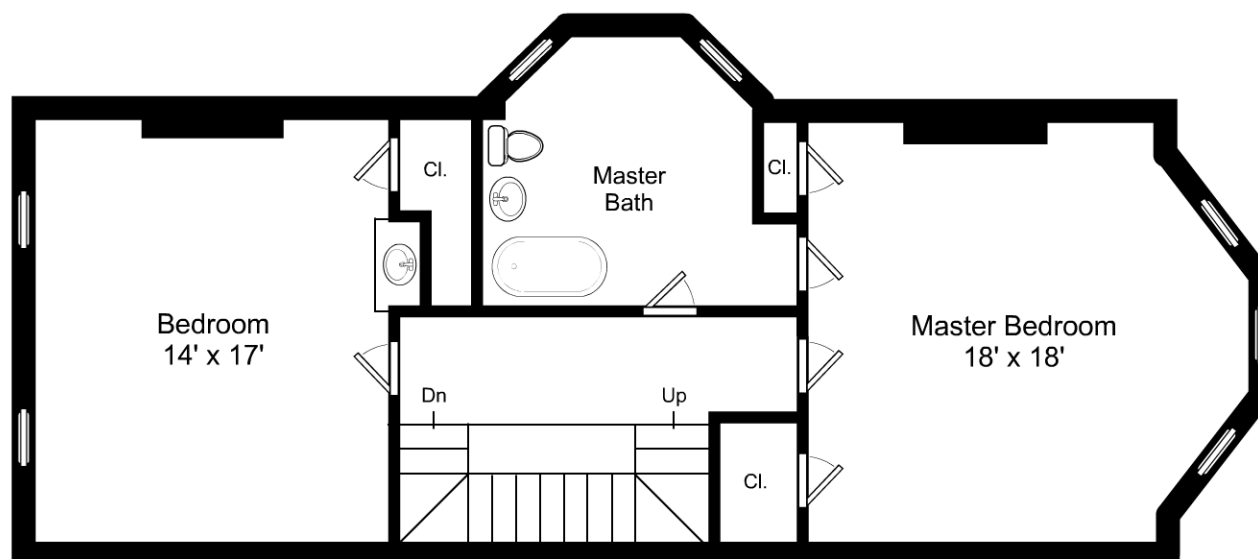


1/8" = 1'-0"

— = 12"

## 193 West Brookline Street / Parlor Level

Listing no. 20160302S3



This is an artistic rendering, not a technical drawing. Dimensions are estimates and are not guaranteed. May not be to exact scale.

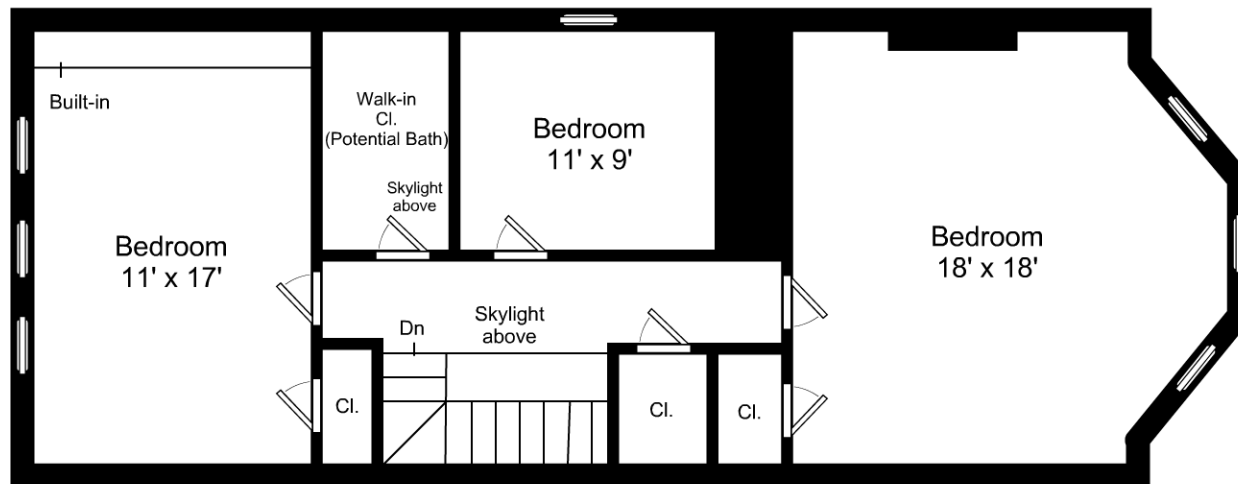
Ceiling Height: 10'1"



1/8" = 1'-0"  
— = 12"

## 193 West Brookline Street / Third Floor

Listing no. 20160302S3



This is an artistic rendering, not a technical drawing. Dimensions are estimates and are not guaranteed. May not be to exact scale.

Ceiling Height: 9'1"

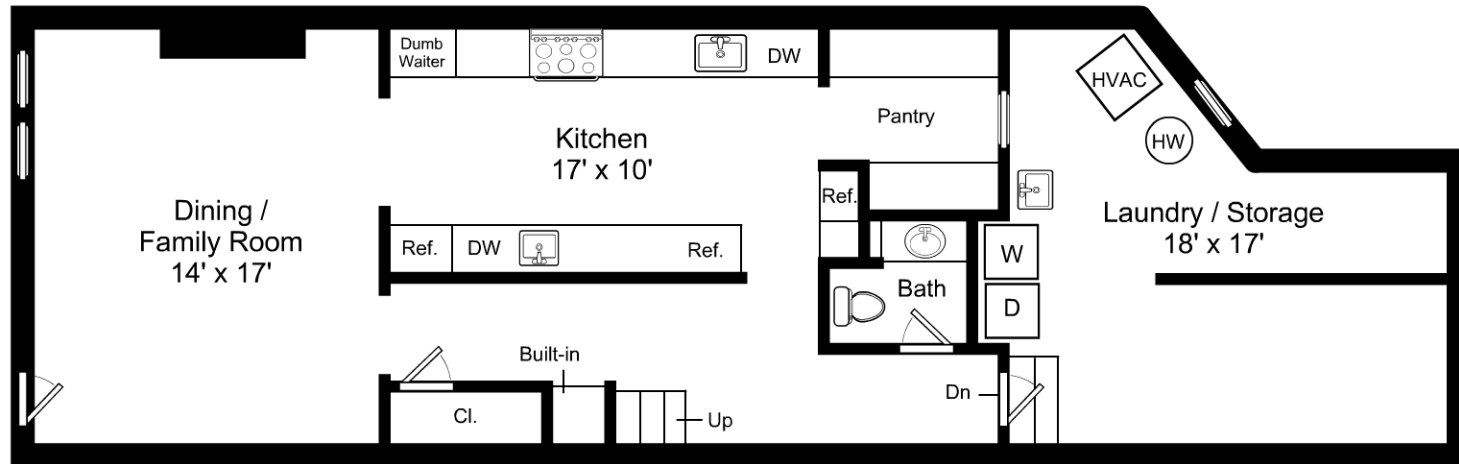


1/8" = 1'-0"

— = 12"

## 193 West Brookline Street / Fourth Floor

Listing no. 20160302S3



This is an artistic rendering, not a technical drawing. Dimensions are estimates and are not guaranteed. May not be to exact scale.

Ceiling Height: 8'1" - 9'1"



1/8" = 1'-0"

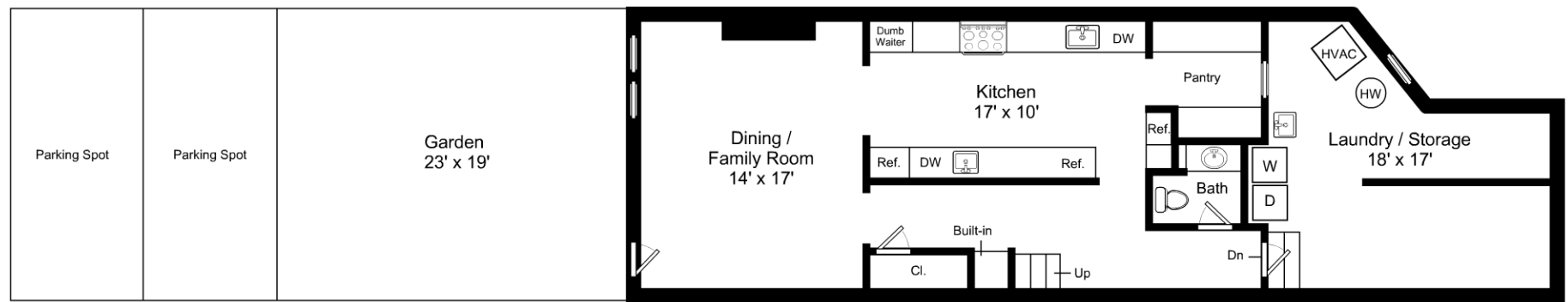
1/4" = 12"

## 193 West Brookline Street / Garden Level

Listing no. 20160302S3

**BostonVirtualImaging**  
LLC

powered by Icovia®



This is an artistic rendering, not a technical drawing. Dimensions are estimates and are not guaranteed. May not be to exact scale.

Ceiling Height: 8'1" - 9'1"



3/32" = 1'-0"

└─ = 12"

## 193 West Brookline Street / Garden Level

Listing no. 20160302S3