

1/8" = 1'-0"
 — = 12"

110A Milford St / First Floor

Listing no. 20160307K1

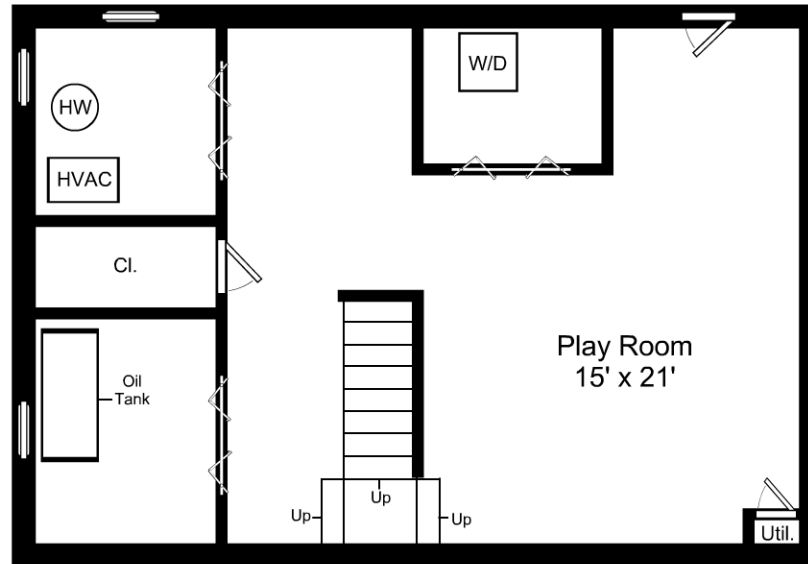


This is an artistic rendering, not a technical drawing.
 Dimensions are estimates and are not guaranteed.
 May not be to exact scale.
 Ceiling Height: 8' 0"

1/8" = 1'-0"
 — = 12"

110A Milford St / Second Floor

Listing no. 20160307K1



This is an artistic rendering, not a technical drawing.
 Dimensions are estimates and are not guaranteed.
 May not be to exact scale.
 Ceiling Height: 7' 6"

1/8" = 1'-0"
 — = 12"

110A Milford St / Lower Level

Listing no. 20160307K1