 $\angle = 12''$

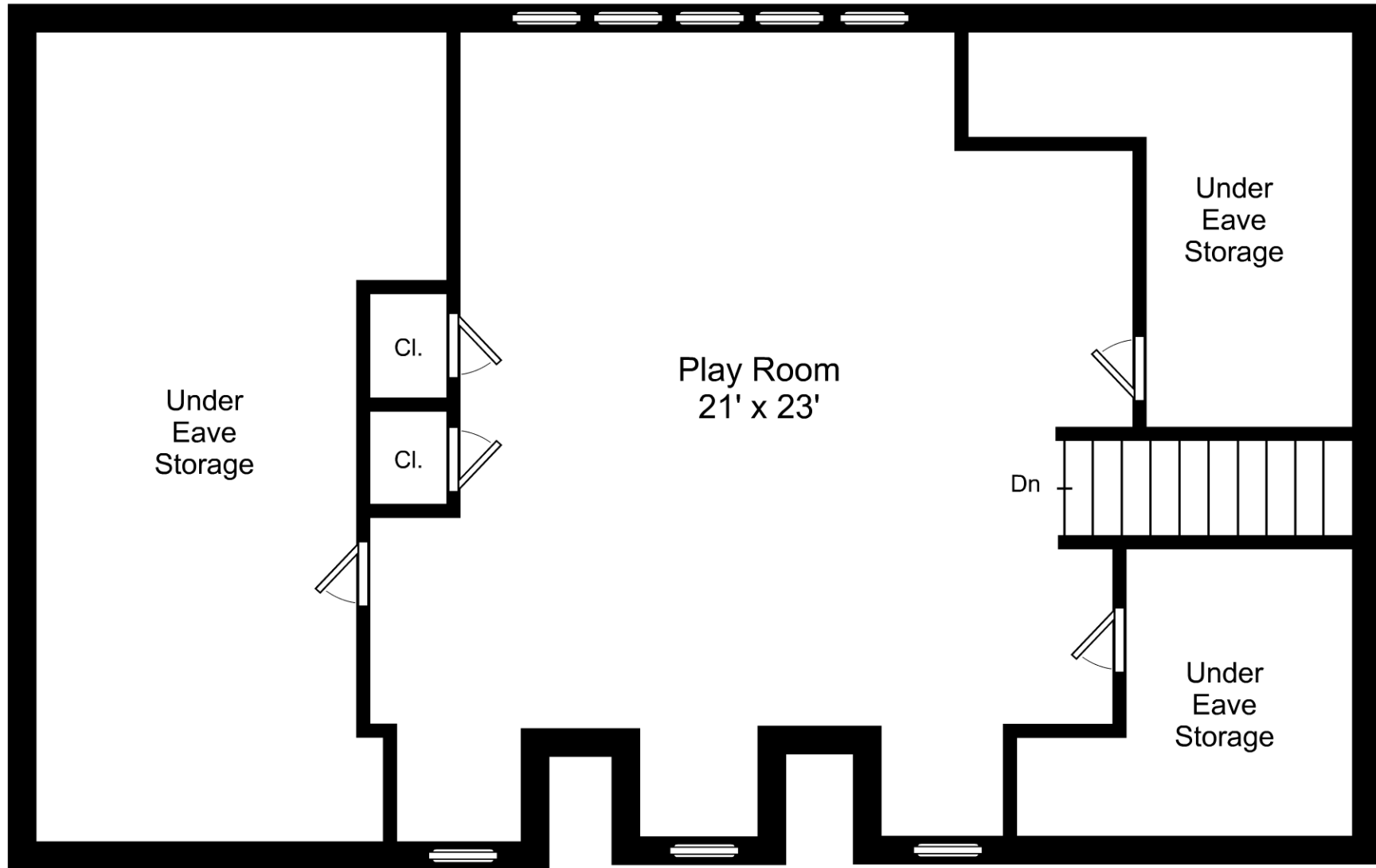


3/32" = 1'-0"

└─ = 12"

192 Old Connecticut Path / Second Floor

Listing no. 20160321S1



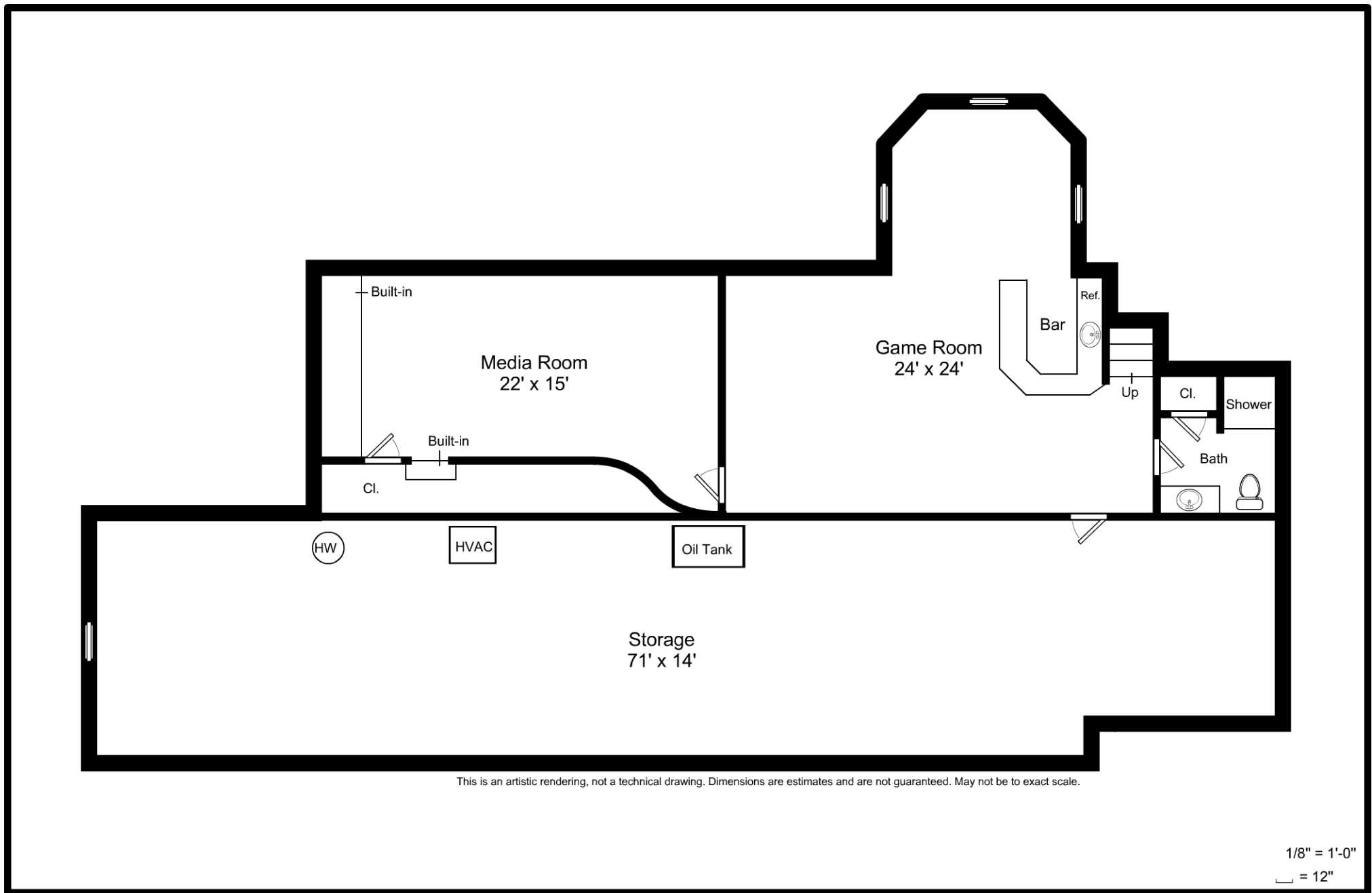
This is an artistic rendering, not a technical drawing. Dimensions are estimates and are not guaranteed. May not be to exact scale.

3/16" = 1'-0"

└─ = 12"

192 Old Connecticut Path / Third Floor

Listing no. 20160321S1



192 Old Connecticut Path / Lower Level

Listing no. 20160321S1