

1/16" = 1'-0"
 1/2" = 12"

67 Berkeley Street / First Floor

Listing no. 20160324S1

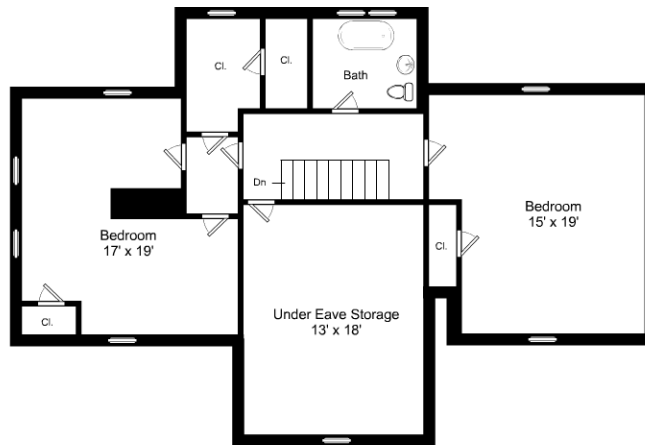


This is an artistic rendering, not a technical drawing. Dimensions are estimates and are not guaranteed. May not be to exact scale.

1/16" = 1'-0"
 1/2" = 12"

67 Berkeley Street / Second Floor

Listing no. 20160324S1



This is an artistic rendering, not a technical drawing. Dimensions are estimates and are not guaranteed. May not be to exact scale.

1/16" = 1'-0"

└ = 12"

67 Berkeley Street / Third Floor

Listing no. 20160324S1