

1/16" = 1'-0"

$$\underline{\underline{L}} = 12''$$

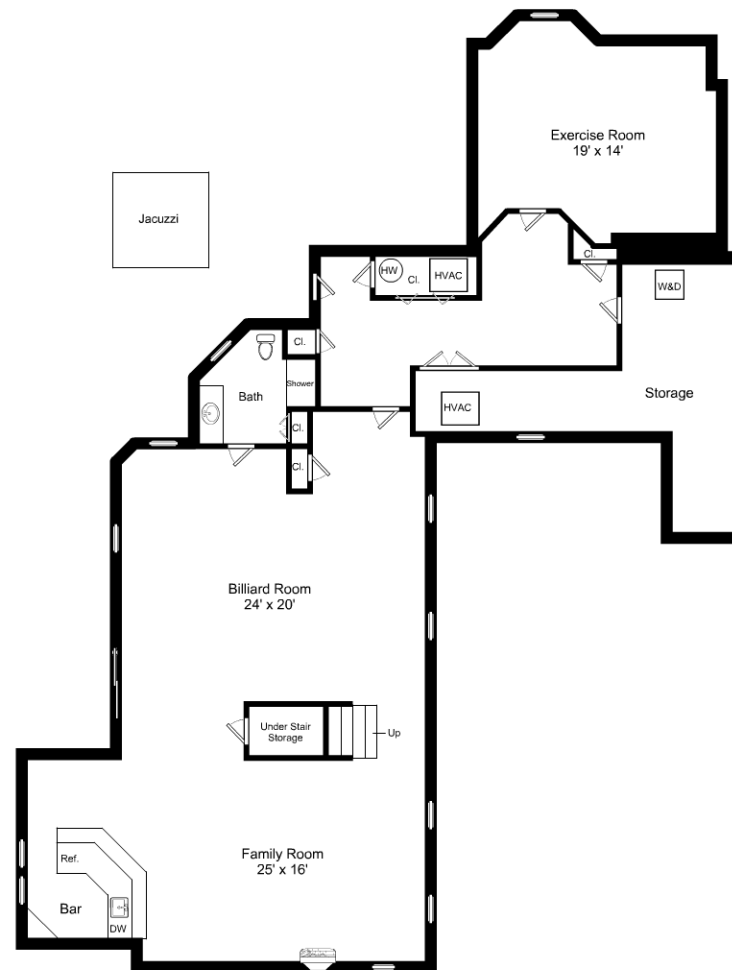
98 Pope Road / First Floor

Listing no. 20160329S3


$$1/16'' = 1'-0''$$
$$\perp = 12''$$

98 Pope Road / Second Floor

Listing no. 20160329S3



1/16" = 1'-0"
 1/32" = 1/2"

98 Pope Road / Lower Level

Listing no. 20160329S3