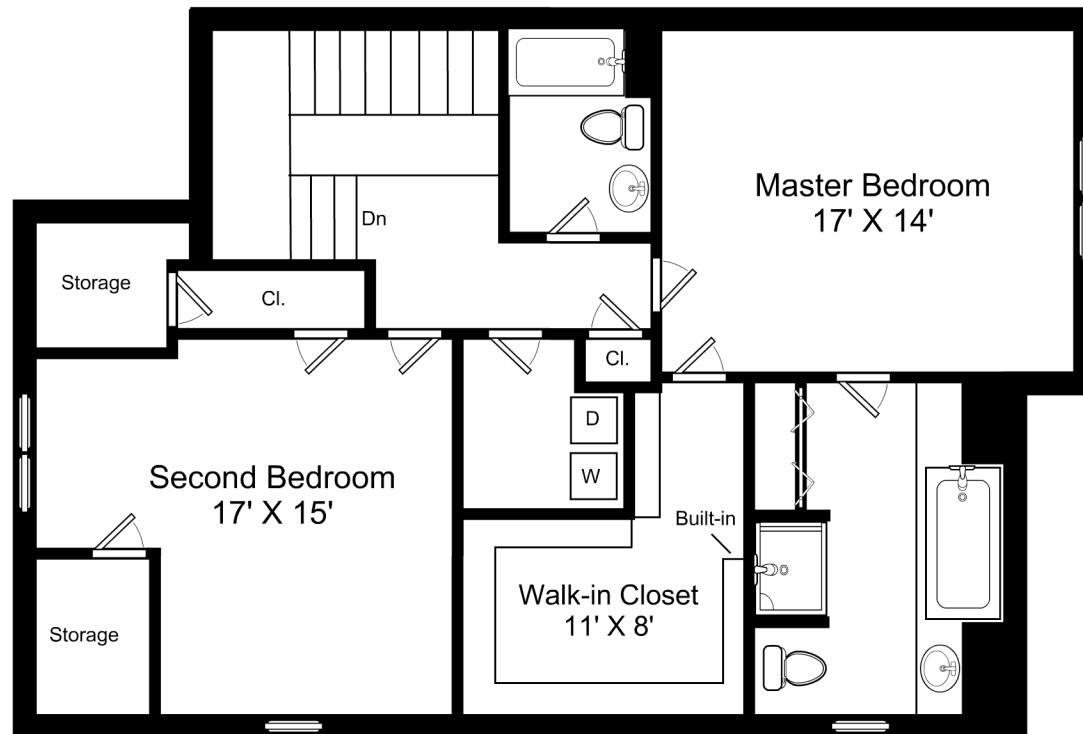


1/8" = 1'-0"
 — = 12"

342c Boylston Street / First Floor

Listing no. 20160406A1



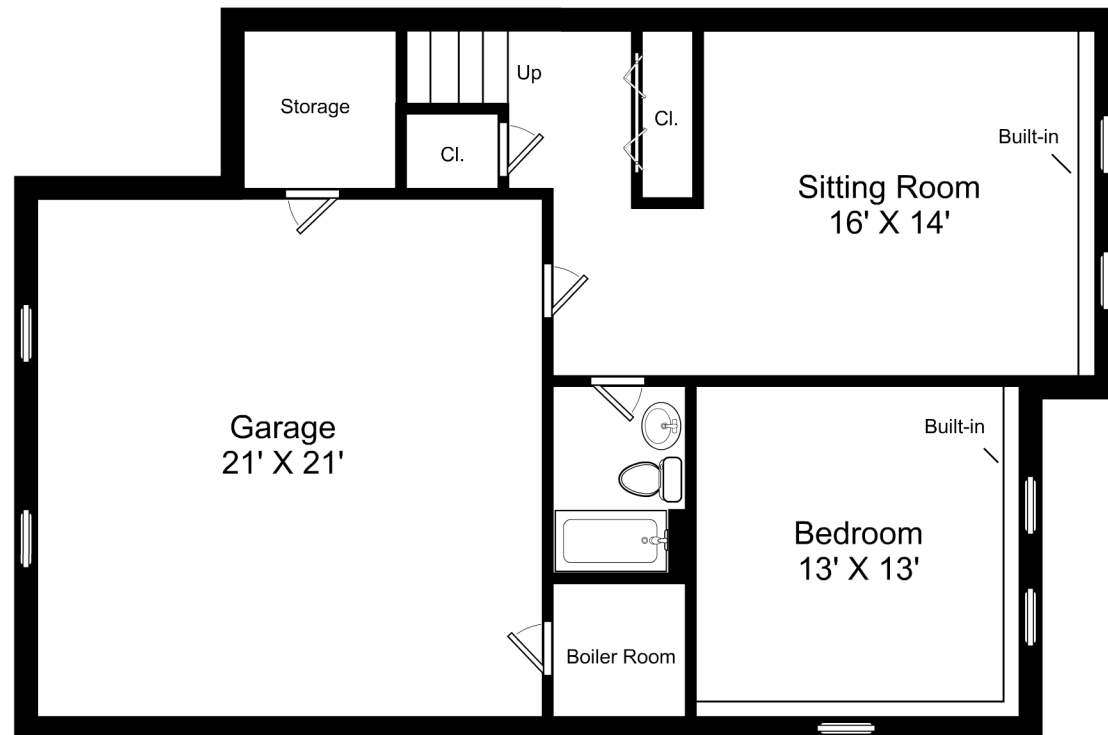
Artistic rendering for visual purposes only. Dimensions are estimates and are not guaranteed. May not be to exact scale.

Ceiling Height: 7'11"

1/8" = 1'-0"
 — = 12"

342c Boylston Street / Second Floor

Listing no. 20160406A1



Artistic rendering for visual purposes only. Dimensions are estimates and are not guaranteed. May not be to exact scale.

Ceiling Height: 7'10"

1/8" = 1'-0"
 └─ = 12"

342c Boylston Street / Lower Level

Listing no. 20160406A1