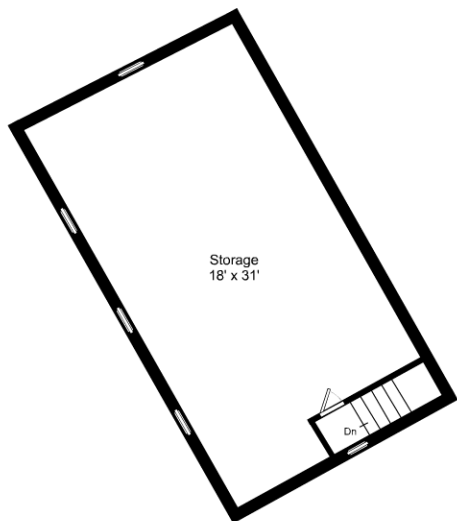


1/16" = 1'-0"
 1/2" = 12"

4 Pondview Lane / First Floor

Listing no. 20160708S1

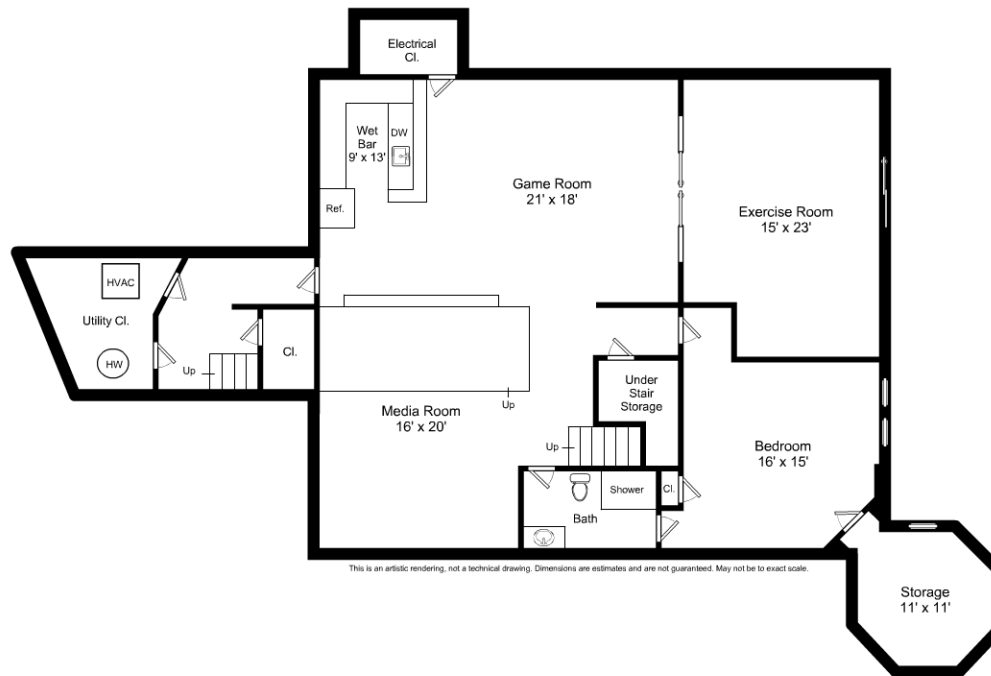


This is an artistic rendering, not a technical drawing. Dimensions are estimates and are not guaranteed. May not be to exact scale.

1/16" = 1'-0"
 L = 12"

4 Pondview Lane / Second Floor

Listing no. 20160708S1



1/16" = 1'-0"
 L = 12"

4 Pondview Lane / Lower Level

Listing no. 20160708S1