

1/16" = 1'-0"
 └ = 12"

351 Dudley Road / First Floor

Listing no. 20160713S1

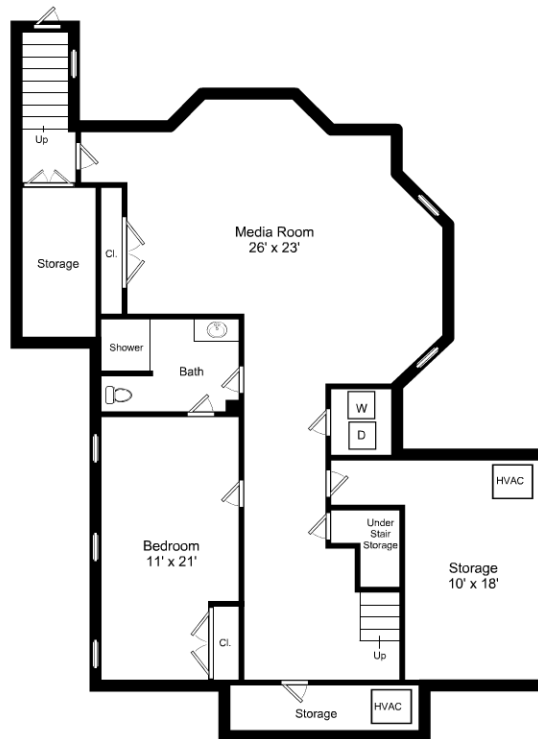


This is an artistic rendering, not a technical drawing. Dimensions are estimates and are not guaranteed. May not be to exact scale.

1/16" = 1'-0"
 1/2" = 12"

351 Dudley Road / Second Floor

Listing no. 20160713S1



This is an artistic rendering, not a technical drawing. Dimensions are estimates and are not guaranteed. May not be to exact scale.

1/16" = 1'-0"
 L = 12"

351 Dudley Road / Lower Level

Listing no. 20160713S1