

1/8" = 1'-0"

$$\text{—} = 12''$$

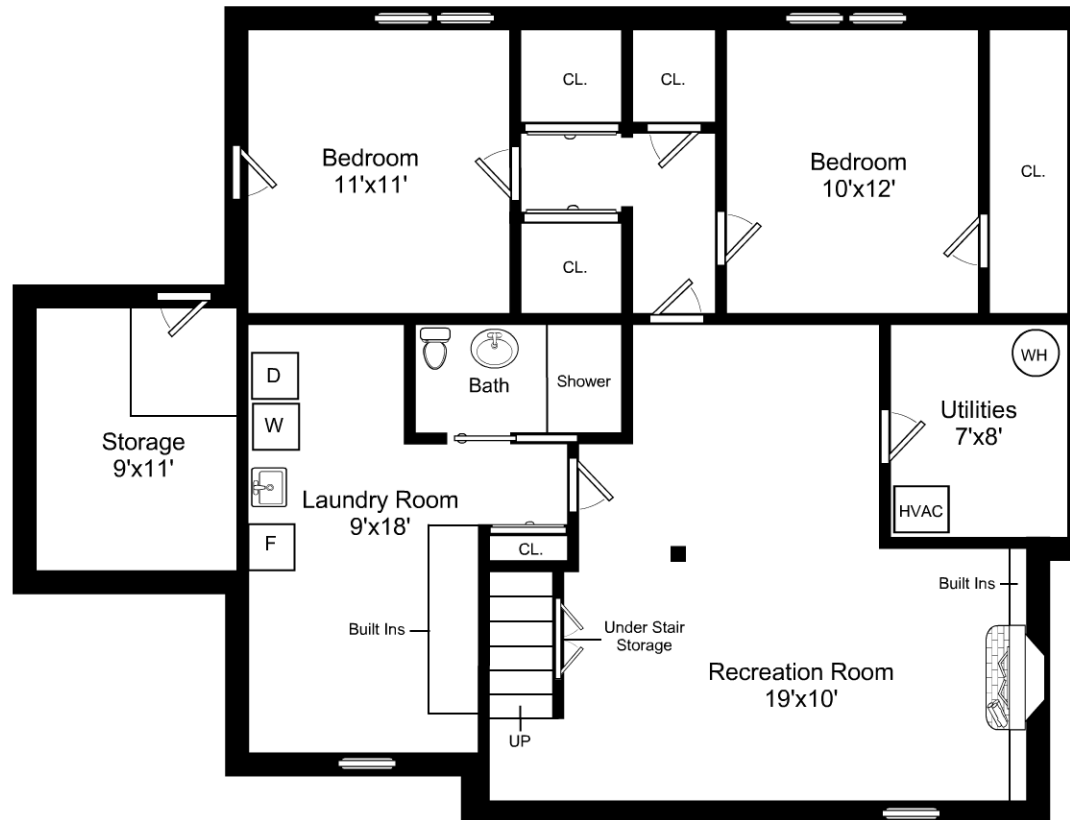


This is an artistic rendering, not a technical drawing.  
Dimensions are estimates and are not guaranteed. May not be to exact scale.

1/8" = 1'-0"  
└─ = 12"

## 303 Upland Avenue / Second Floor

Listing no. 09082016j1



This is an artistic rendering, not a technical drawing.  
 Dimensions are estimates and are not guaranteed. May not be to exact scale.

1/8" = 1'-0"  
 — = 12"

## 303 Upland Avenue / Basement

Listing no. 09082016j1