



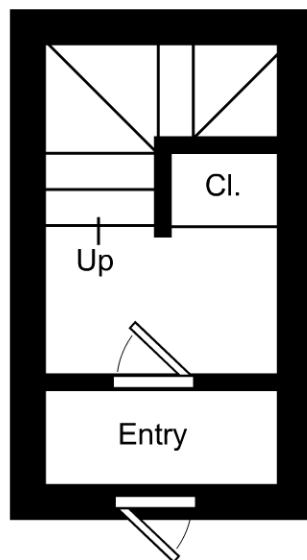
This is an artistic rendering, not a technical drawing. Dimensions are estimates and are not guaranteed. May not be to exact scale.

3/16" = 1'-0"

— = 12"

425 Lowell Avenue / First Floor

Listing no. 20161011S2



This is an artistic rendering, not a technical drawing. Dimensions are estimates and are not guaranteed. May not be to exact scale.

$\frac{3}{16}'' = 1'-0''$
— = 12"

425 Lowell Avenue / Entry Level

Listing no. 20161011S2