

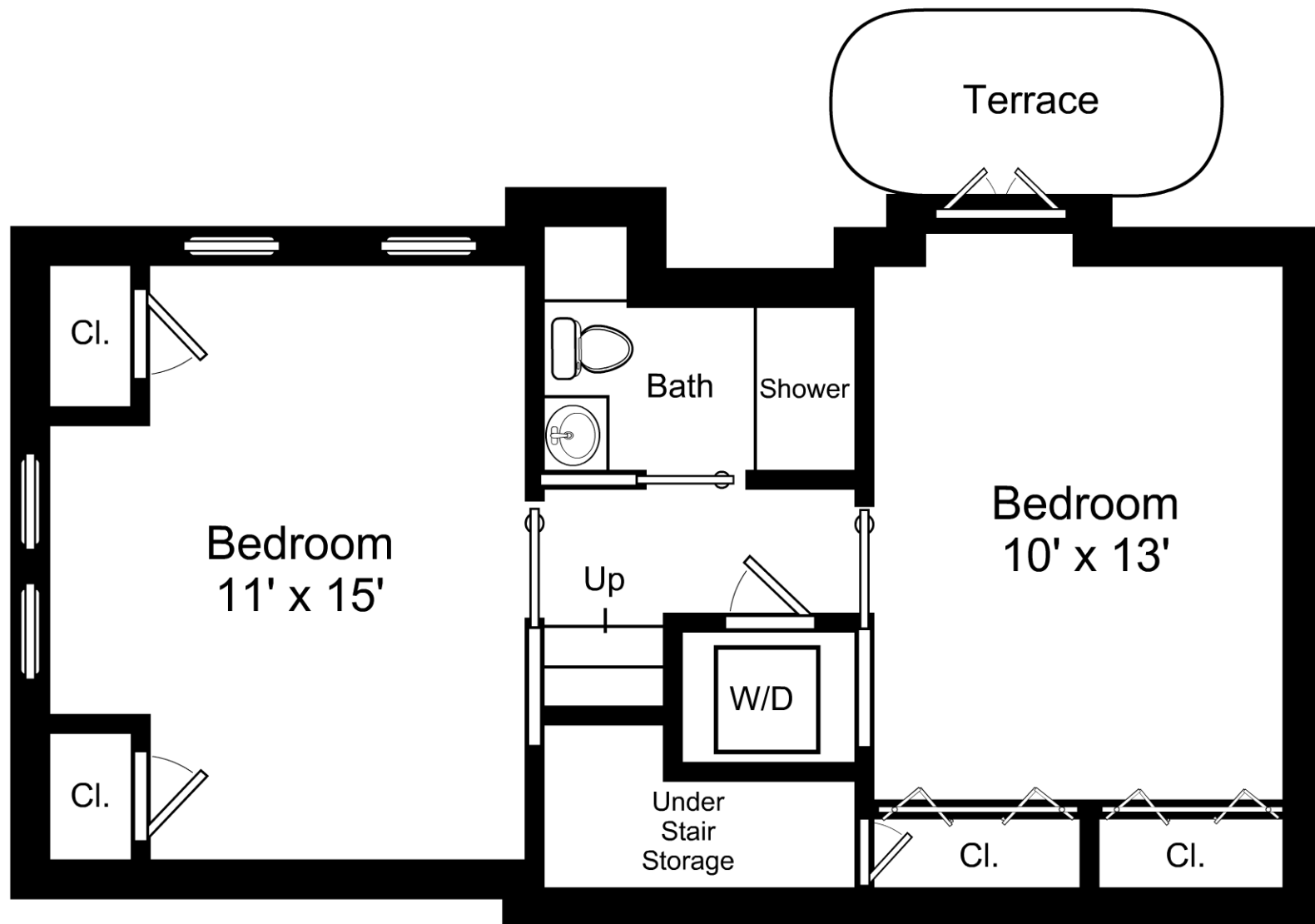
This is an artistic rendering, not a technical drawing. Dimensions are estimates and are not guaranteed. May not be to exact scale.

Ceiling Height: 10'7" - 11'5"

1/4" = 1'-0"
— = 12"

130 Appleton Street, Unit 4D / Upper Level

Listing no. 20170403S2



This is an artistic rendering, not a technical drawing. Dimensions are estimates and are not guaranteed. May not be to exact scale.

Ceiling Height: 9'11" - 11'3"

1/4" = 1'-0"
 — = 12"

130 Appleton Street, Unit 4D / Lower Level

Listing no. 20170403S2