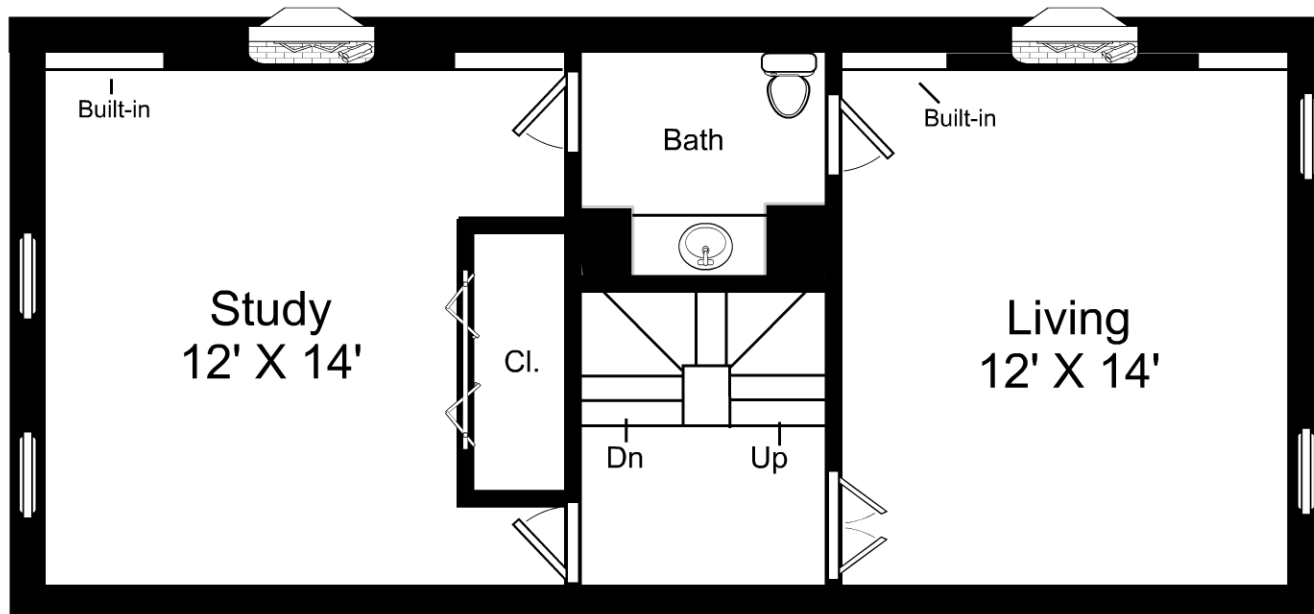


Artistic rendering for visual purposes only.
Dimensions are estimates and are not guaranteed.
May not be to exact scale.
Ceiling Height: 8' 4"

3/16" = 1'-0"
└─ = 12"

19 Phillips Street / First Floor

Listing no. P205092017



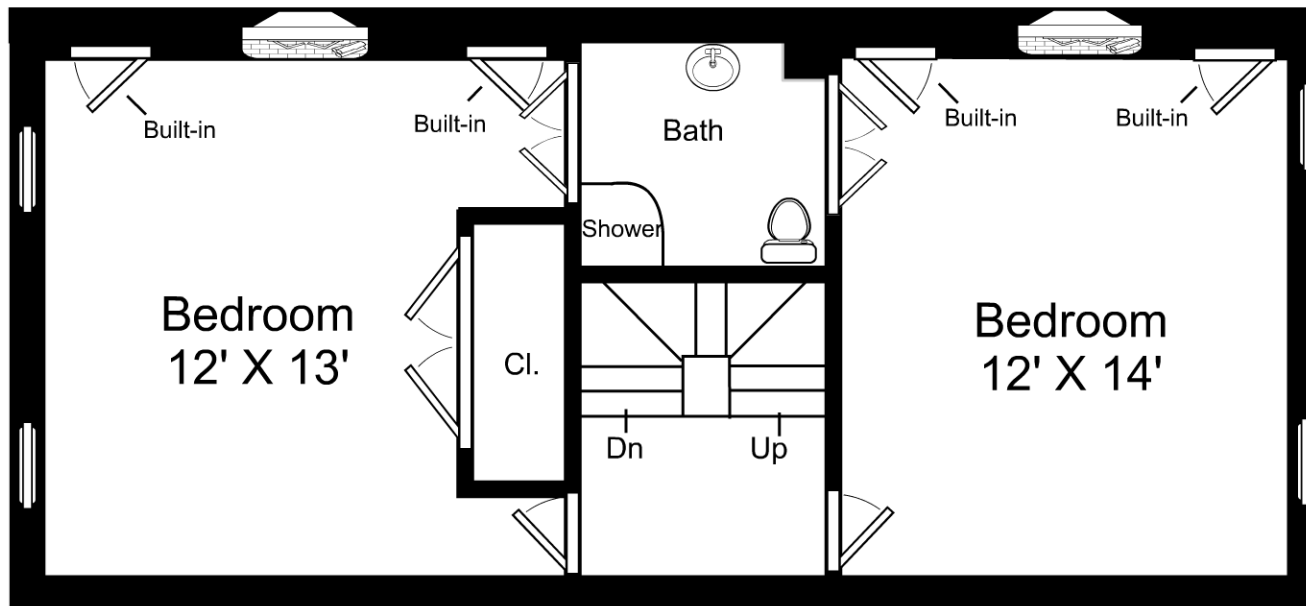
Artistic rendering for visual purposes only.
Dimensions are estimates and are not guaranteed.
May not be to exact scale.

Ceiling Height: 9' 3"

$\frac{3}{16}'' = 1'-0''$
— = 12"

19 Phillips Street / Second Floor

Listing no. P205092017



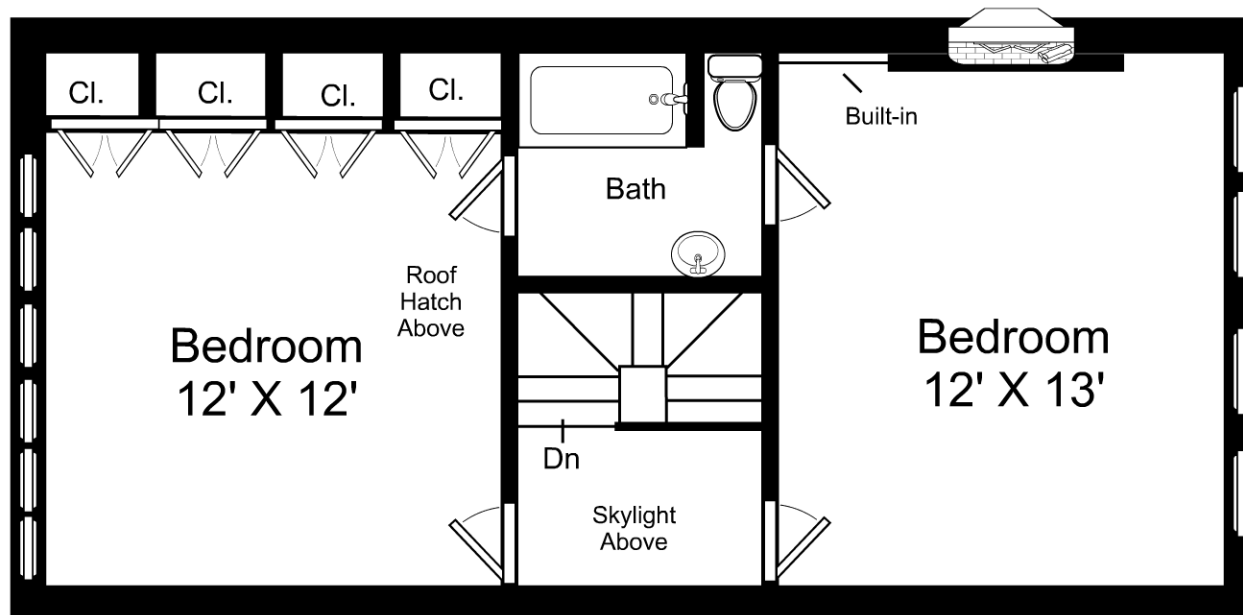
Artistic rendering for visual purposes only.
 Dimensions are estimates and are not guaranteed.
 May not be to exact scale.

Ceiling Height: 7' 9"

$\frac{3}{16}" = 1'-0"$
 $\text{—} = 12"$

19 Phillips Street / Third Floor

Listing no. P205092017

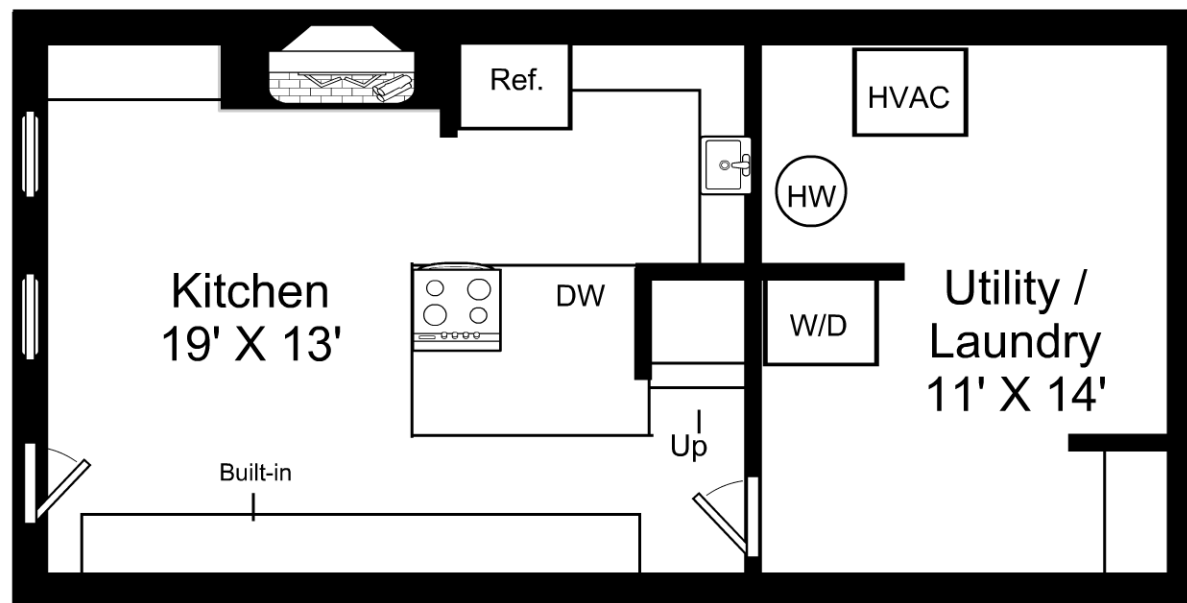


Artistic rendering for visual purposes only.
 Dimensions are estimates and are not guaranteed.
 May not be to exact scale.
 Ceiling Height: 8' 5"

3/16" = 1'-0"
 — = 12"

19 Phillips Street / Fourth Floor

Listing no. P205092017



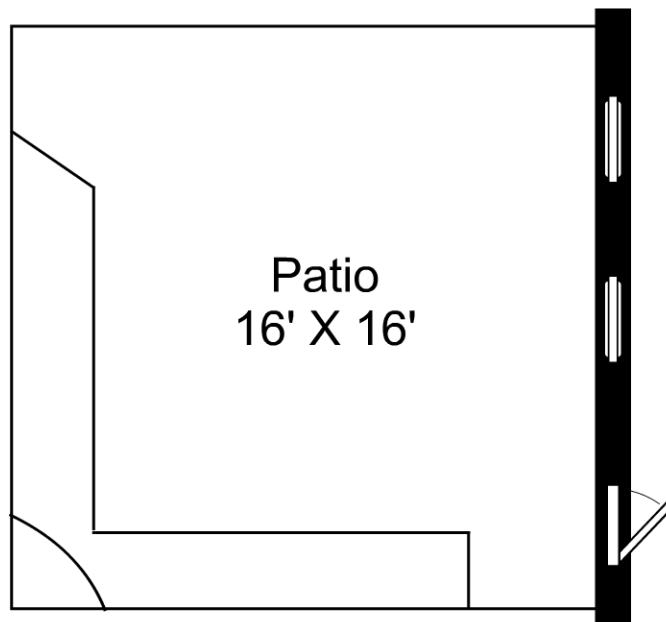
Artistic rendering for visual purposes only.
 Dimensions are estimates and are not guaranteed.
 May not be to exact scale.

Ceiling Height: 7' 9"

3/16" = 1'-0"
 — = 12"

19 Phillips Street / Lower Level

Listing no. P205092017

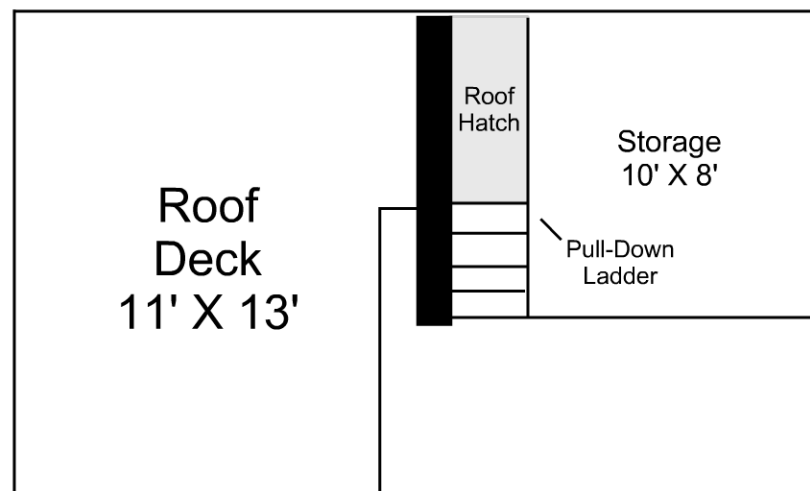


Artistic rendering for visual purposes only.
Dimensions are estimates and are not guaranteed.
May not be to exact scale.

$\frac{3}{16}'' = 1'-0''$
— = 12''

19 Phillips Street / Patio

Listing no. P205092017



Artistic rendering for visual purposes only.
Dimensions are estimates and are not guaranteed.
May not be to exact scale.

$\frac{3}{16}'' = 1'-0''$
— = 12"

19 Phillips Street / Roof Deck

Listing no. P205092017