

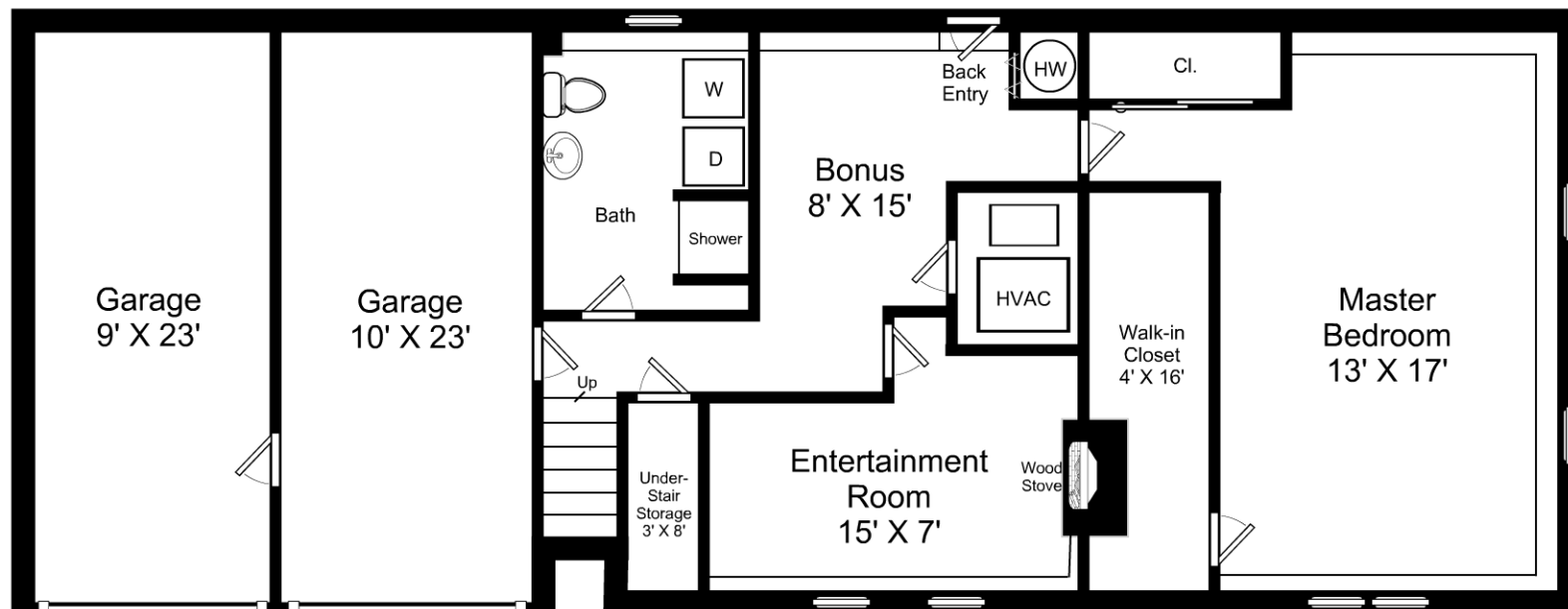


Artistic rendering for visual purposes only.
Dimensions are estimates and are not guaranteed.
May not be to exact scale.
Ceiling Height: 7' 6" - 10' 2"

1/8" = 1'-0"
— = 12"

664 Pond Street / First Floor

Listing no. P102202018



Artistic rendering for visual purposes only.
 Dimensions are estimates and are not guaranteed.
 May not be to exact scale.
 Ceiling Height: 7' 8"

1/8" = 1'-0"
 — = 12"

664 Pond Street / Lower Level

Listing no. P102202018