

1/16" = 1'-0"  
 1" = 12"

## 11 Plymouth Road / First Floor

Listing no. 20180803S2

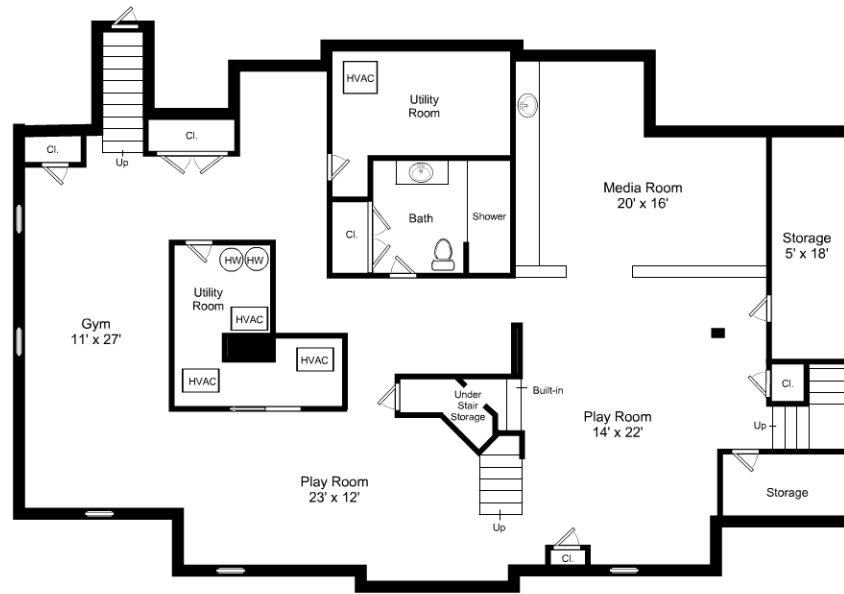


Artistic Rendering for visual purposes only. Dimensions are estimates and are not guaranteed. May not be to exact scale.

1/16" = 1'-0"  
 L = 12"

## 11 Plymouth Road / Second Floor

Listing no. 20180803S2



1/16" = 1'-0"  
 — = 12"

## 11 Plymouth Road / Lower Level

Listing no. 20180803S2