

Artistic rendering for visual purposes only. Dimensions are estimates and are not guaranteed.

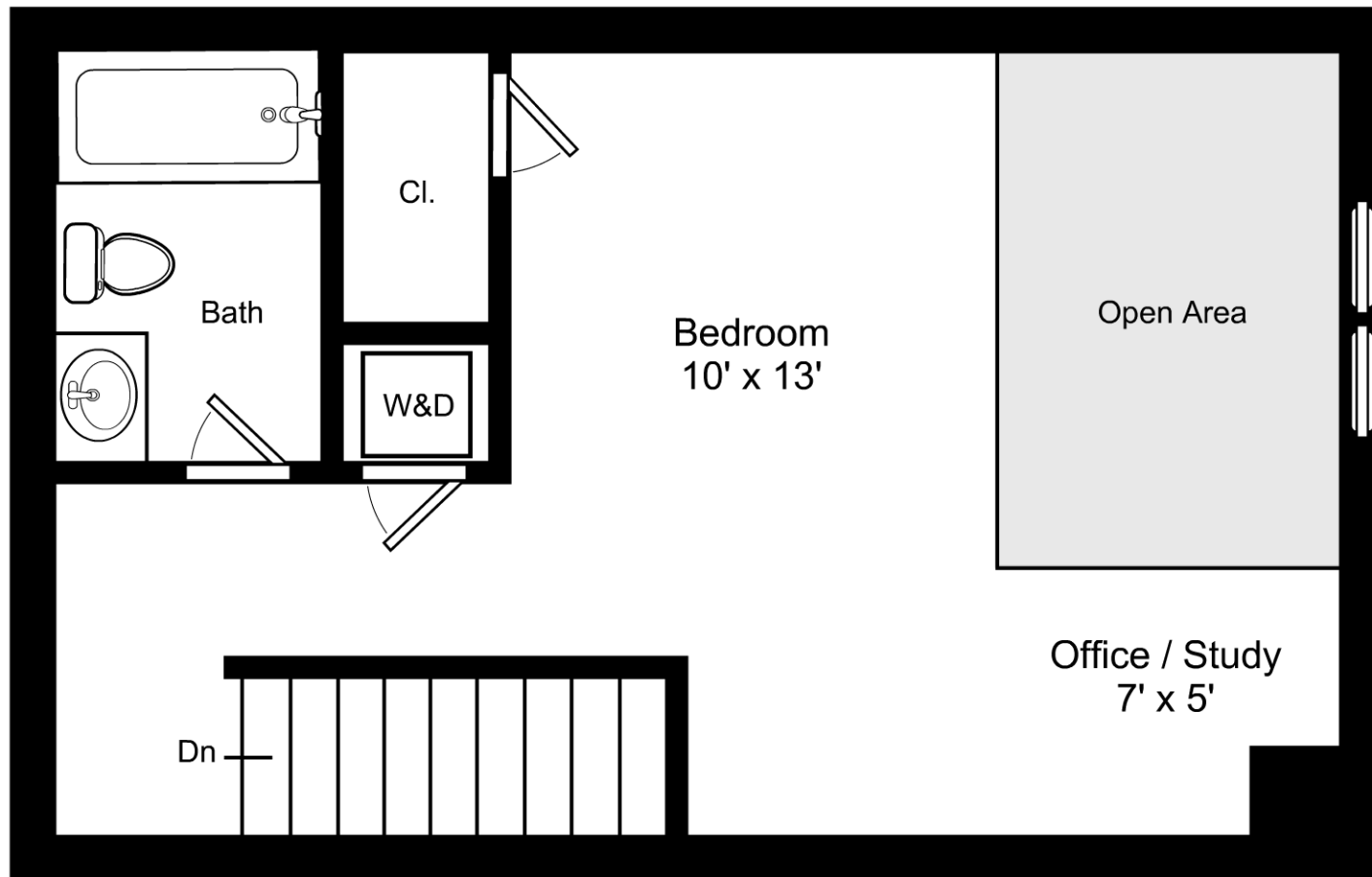
1/4" = 1'-0"
 — = 12"

21 Father Francis Gilday Street, Unit 305 / First Floor

Listing no. 20140113S1

BostonVirtualImaging
 LLC

powered by Icovia®



Artistic rendering for visual purposes only. Dimensions are estimates and are not guaranteed.

1/4" = 1'-0"
 — = 12"

21 Father Francis Gilday Street, Unit 305 / Second Floor

Listing no. 20140113S1

BostonVirtualImaging
 LLC

powered by Icovia®