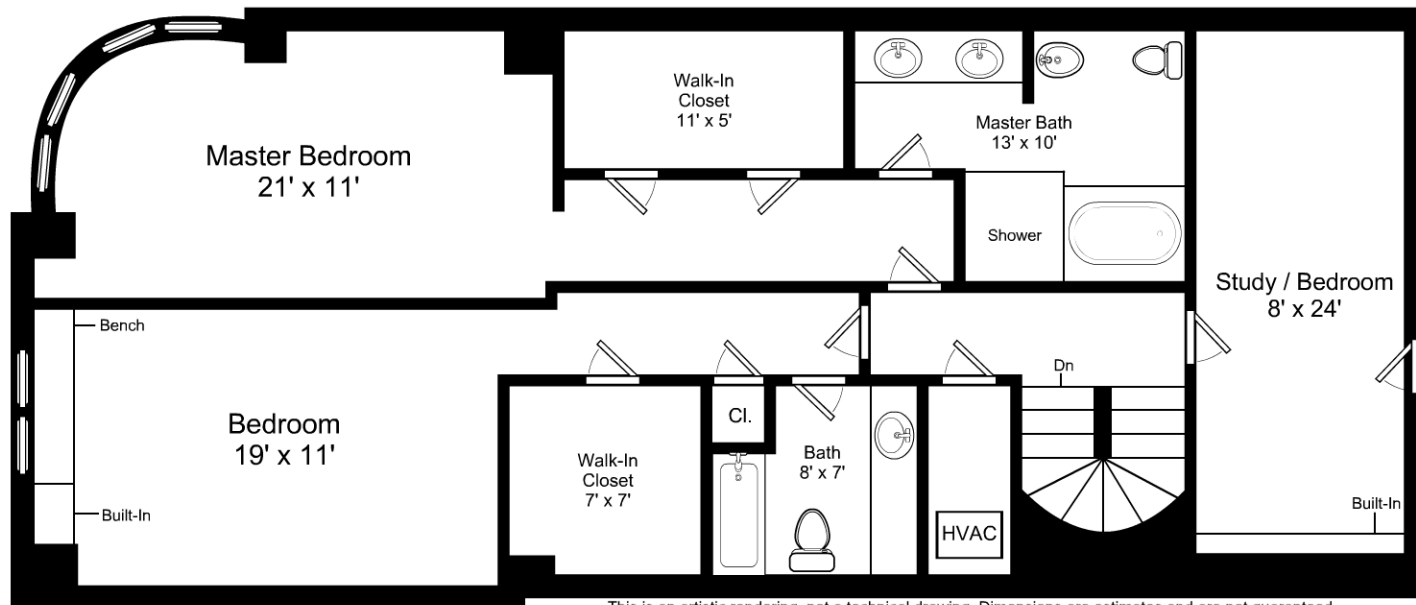


This is an artistic rendering, not a technical drawing. Dimensions are estimates and are not guaranteed.
May not be to exact scale.
Ceiling Height: 7' 11"

1/8" = 1'-0"
1/4" = 12"

300 Boylston Street, Unit 502 / First Floor

Listing no. 20150330K1



This is an artistic rendering, not a technical drawing. Dimensions are estimates and are not guaranteed.
May not be to exact scale.
Ceiling Height: 7' 11"

1/8" = 1'-0"
— = 12"

300 Boylston Street, Unit 502 / Second Floor

Listing no. 20150330K1