

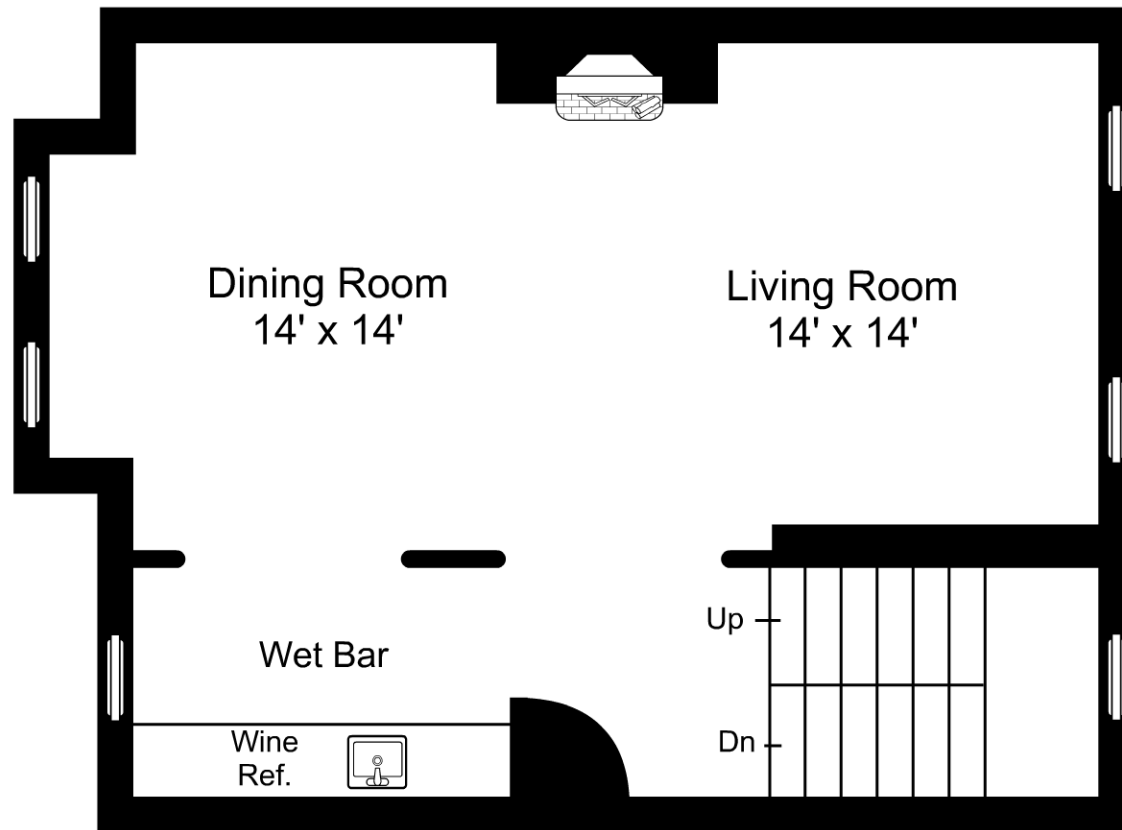
Artistic Rendering for visual purposes only. Dimensions are estimates and are not guaranteed. May not be to exact scale.

Ceiling Height: 8'3"

3/16" = 1'-0"  
 — = 12"

## 2 Cumston Street / First Floor

Listing no. 20180423S1

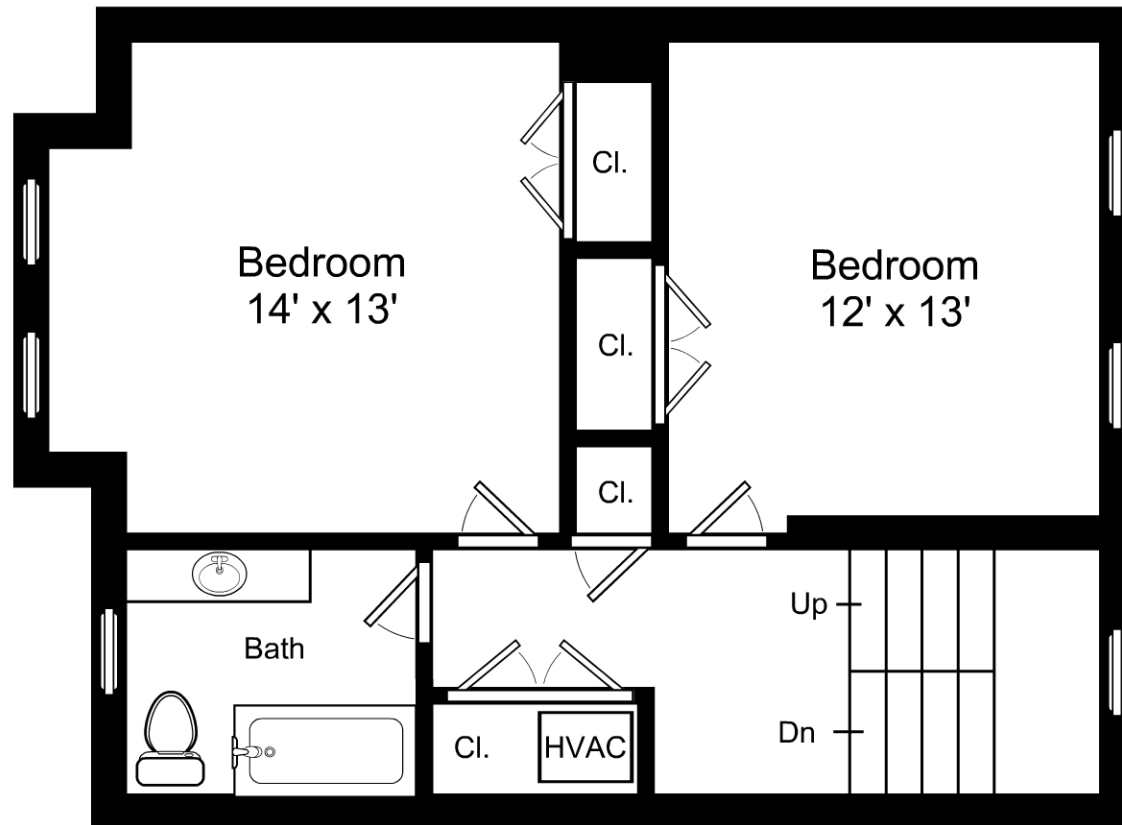


Artistic Rendering for visual purposes only. Dimensions are estimates and are not guaranteed. May not be to exact scale.  
Ceiling Height: 8'2"

3/16" = 1'-0"  
— = 12"

## 2 Cumston Street / Second Floor

Listing no. 20180423S1



Artistic Rendering for visual purposes only. Dimensions are estimates and are not guaranteed. May not be to exact scale.

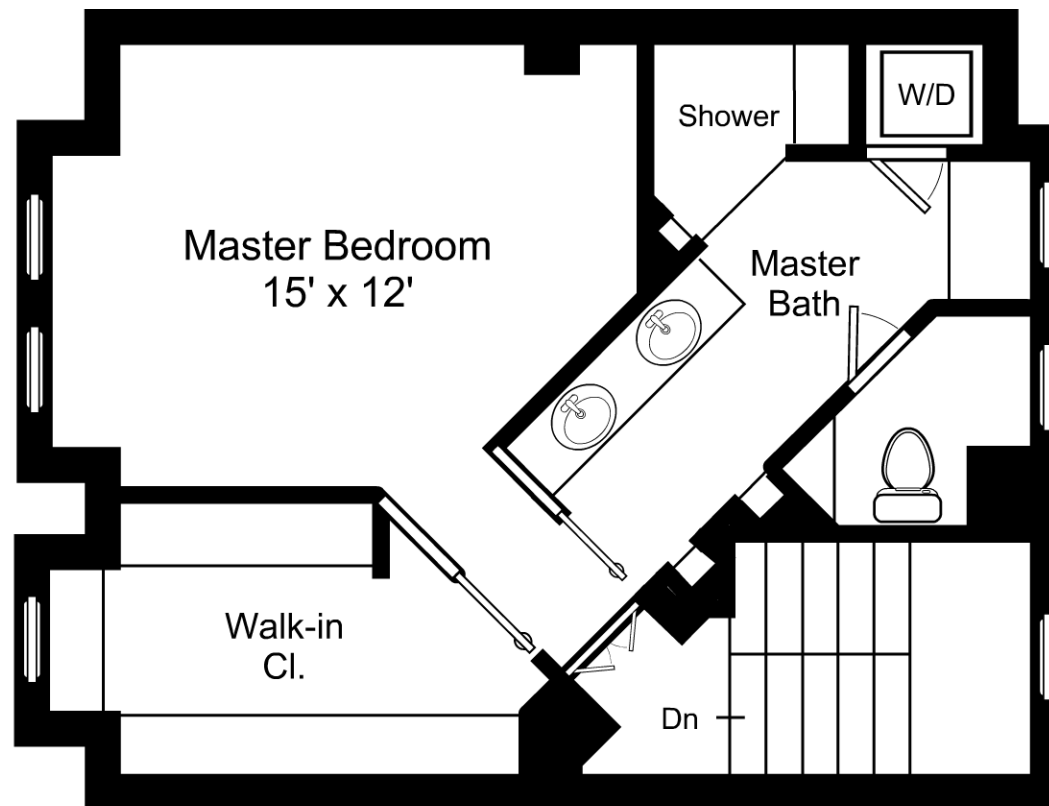
Ceiling Height: 7'7"

$\frac{3}{16}" = 1'-0"$

$\text{—} = 12"$

## 2 Cumston Street / Third Floor

Listing no. 20180423S1



Artistic Rendering for visual purposes only. Dimensions are estimates and are not guaranteed. May not be to exact scale.

Ceiling Height: 7'5"

3/16" = 1'-0"

— = 12"

## 2 Cumston Street / Fourth Floor

Listing no. 20180423S1