

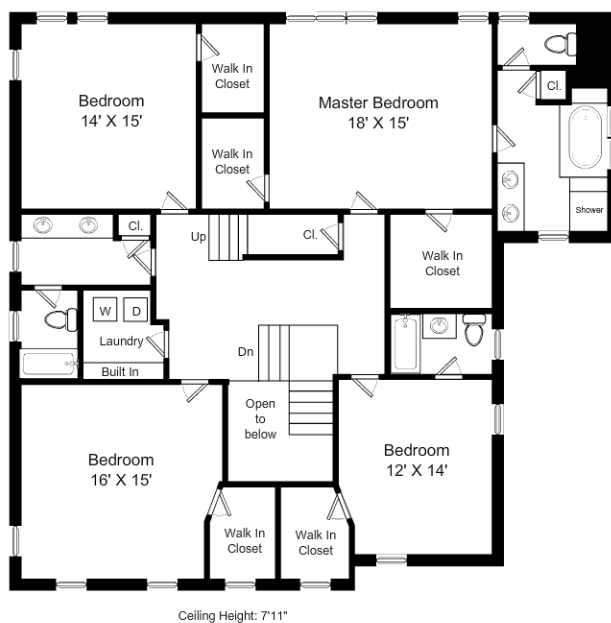
This is an artistic rendering for visual purposes only. Dimensions are estimates and are not guaranteed. May not be to exact scale.  
Ceiling Height: 8'11"

80 Stockdale Road First Floor



powered by 2020 Icovia

This floor plan is a representation and should not be relied on exclusively. Measurements should be verified to ensure accuracy.



80 Stockdale Road Second Floor



powered by 2020 Icovia

This floor plan is a representation and should not be relied on exclusively. Measurements should be verified to ensure accuracy.

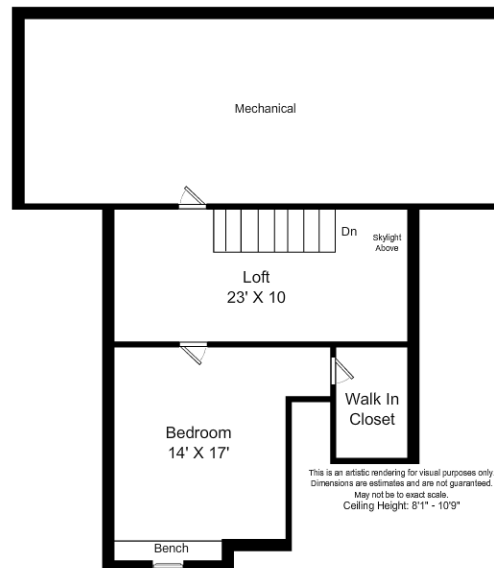


80 Stockdale Road Lower Level



powered by 2020 Icovia

This floor plan is a representation and should not be relied on exclusively. Measurements should be verified to ensure accuracy.



80 Stockdale Road Third Floor



powered by 2020 Icovia

This floor plan is a representation and should not be relied on exclusively. Measurements should be verified to ensure accuracy.