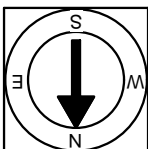


First Floor Plan  
Ceiling Height = 8'-6"



Scale 1/8" = 1'-0"

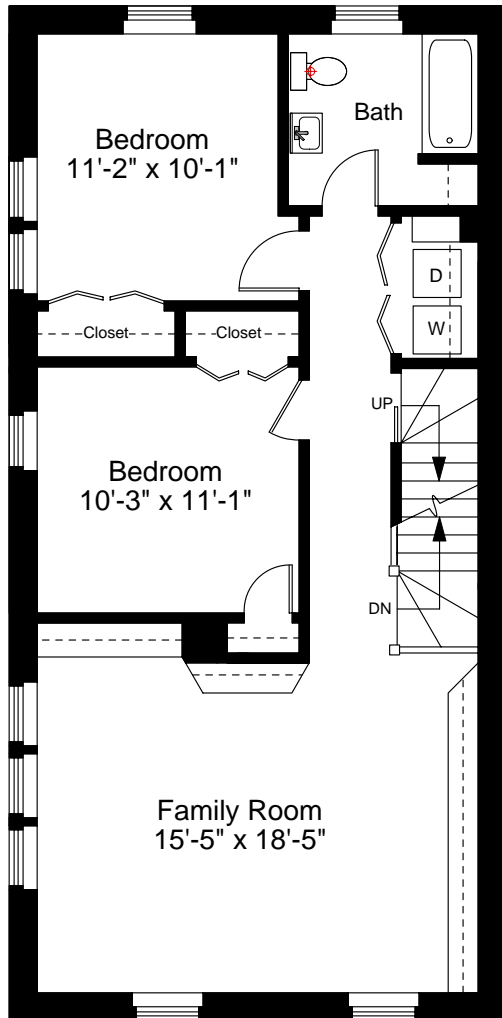
1



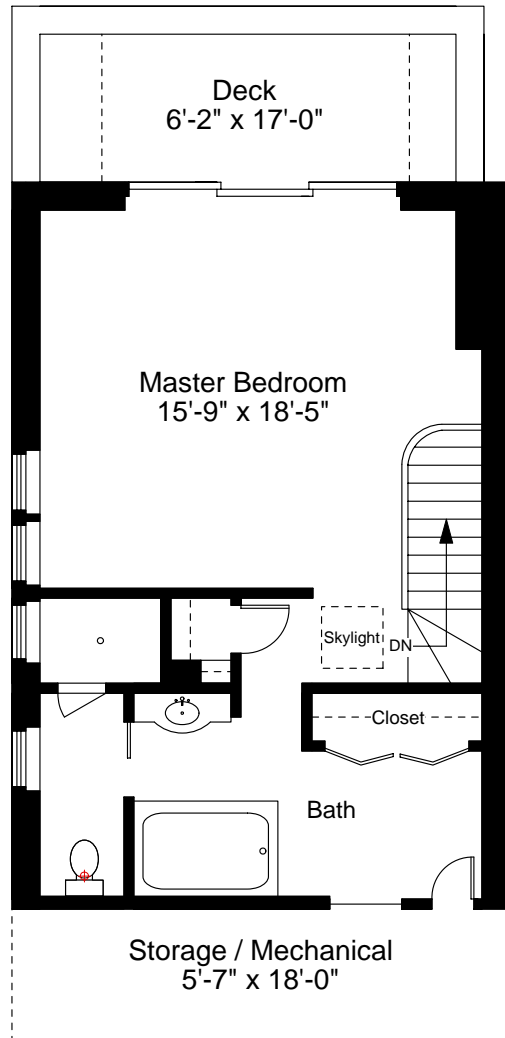
Completed: March, 2006

Note: Dimensions are not guaranteed and are provided for informational purposes only.

© 2006 New England Floor Plans.com  
Licensed to Boston Virtual Imaging



Second Floor Plan  
Ceiling Height = 8'-5"



Third Floor Plan  
Vaulted Ceiling Height = 12'-4"



Scale 1/8" = 1'-0"

