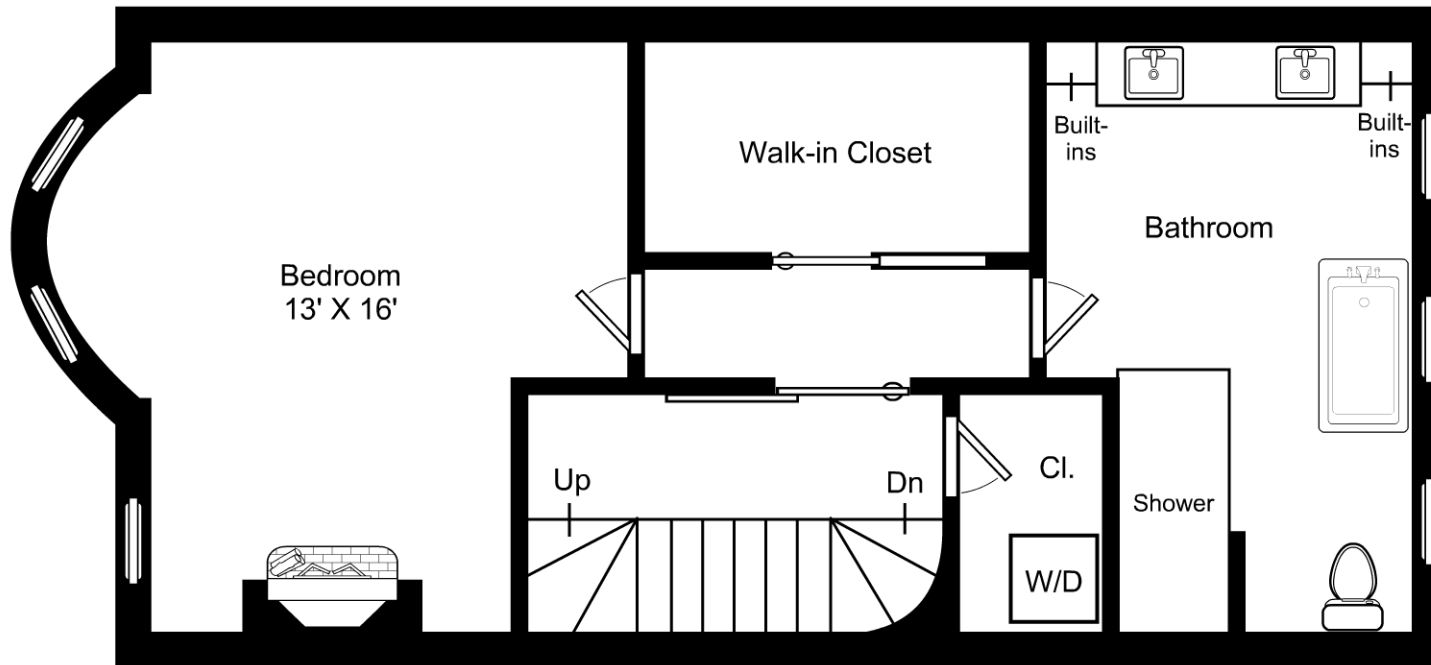


This is an artistic rendering, not a technical drawing. Dimensions are estimates and are not guaranteed. May not be to exact scale.
 Ceiling height: 8'10"

3/16" = 1'-0"
 ┌ = 12"

95 Appleton Street Boston Unit 2 / First Floor

Listing no. 20190328A1



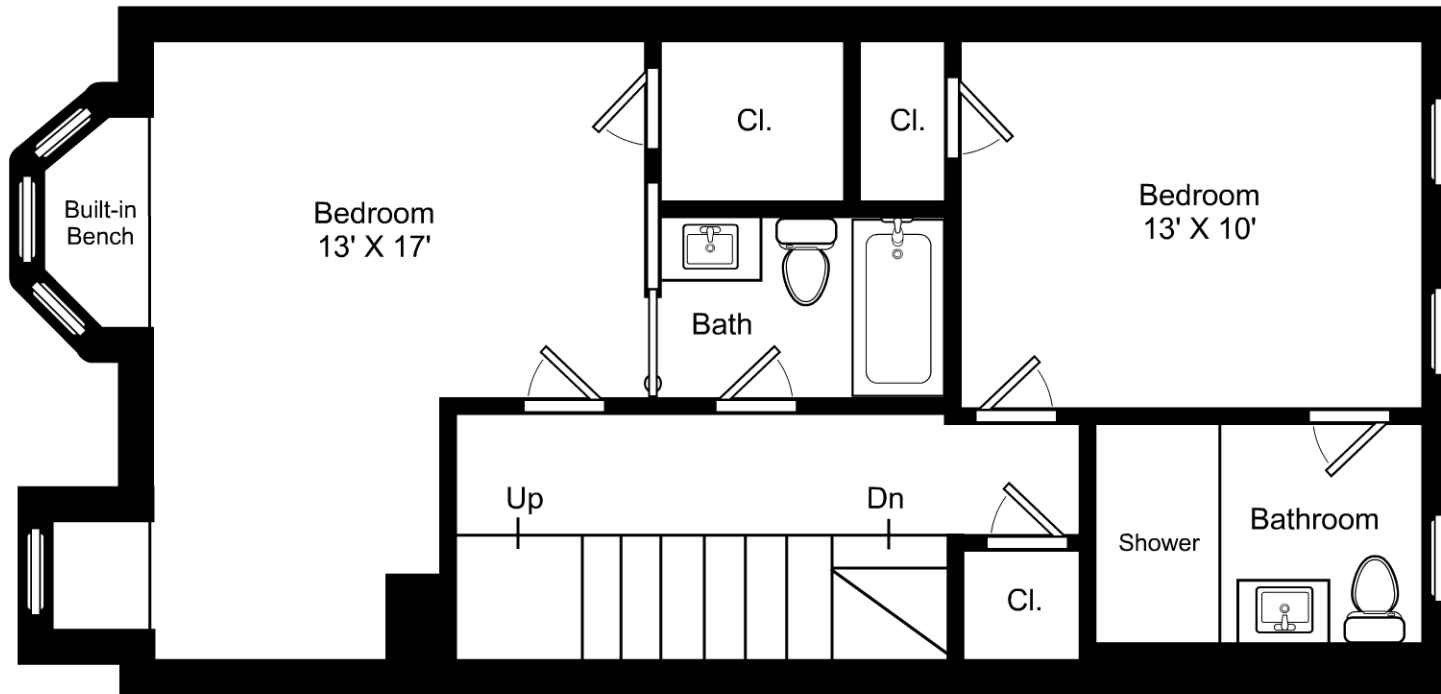
This is an artistic rendering, not a technical drawing. Dimensions are estimates and are not guaranteed. May not be to exact scale.
 Ceiling height: 8'10"

3/16" = 1'-0"
 ┌ = 12"

95 Appleton Street Boston Unit 2 / Second Floor

Listing no. 20190328A1





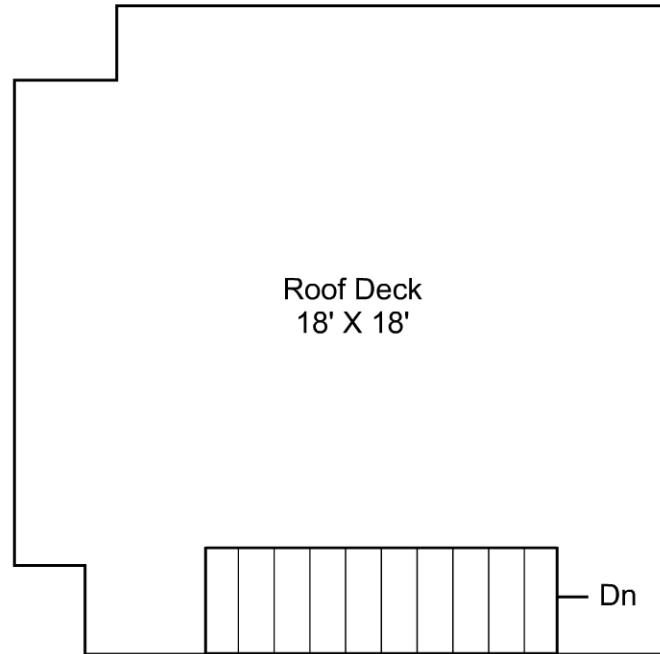
This is an artistic rendering, not a technical drawing. Dimensions are estimates and are not guaranteed. May not be to exact scale.

Ceiling height: 7'10"

3/16" = 1'-0"
 └── = 12"

95 Appleton Street Boston Unit 2 / Third Floor

Listing no. 20190328A1



This is an artistic rendering, not a technical drawing.
Dimensions are estimates and are not guaranteed.
May not be to exact scale.

3/16" = 1'-0"
└── = 12"

95 Appleton Street Boston Unit 2 / Roof Deck

Listing no. 20190328A1