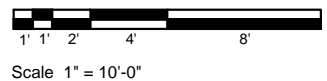


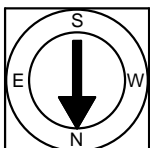
First Floor Plan  
Ceiling Height = 8'-10"

343 Commercial Street  
Union Wharf PH 606  
Boston, MA 02109



Scale 1" = 10'-0"

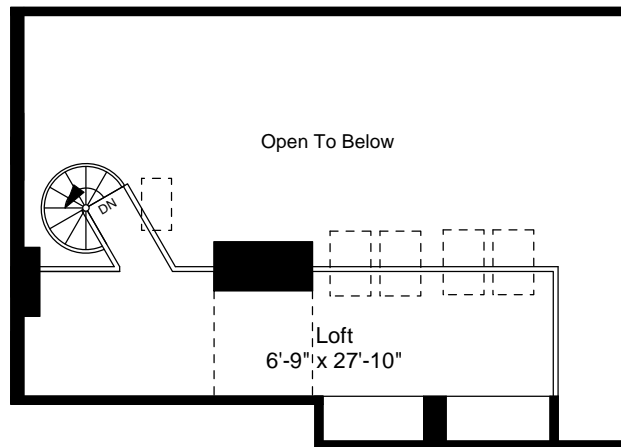
1



Completed: December, 2010

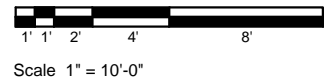
Note: Dimensions are not guaranteed and are provided for informational purposes only.

NEW ENGLAND  
FLOOR PLANS  
& PHOTOGRAPHY  
(800) 328-0217

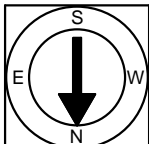


Second Floor Plan  
 Vaulted Ceiling Height = 7'-3"

343 Commercial Street  
 Union Wharf PH 606  
 Boston, MA 02109



2



Completed: December, 2010

Note: Dimensions are not guaranteed and are provided for informational purposes only.

**NEW ENGLAND**  
 FLOOR PLANS  
 & PHOTOGRAPHY  
 (800) 328-0217