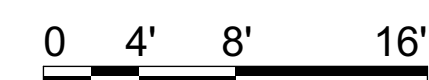
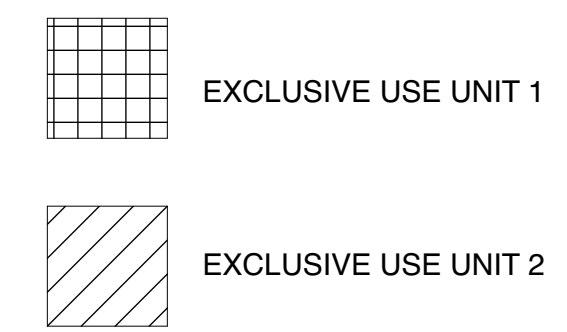


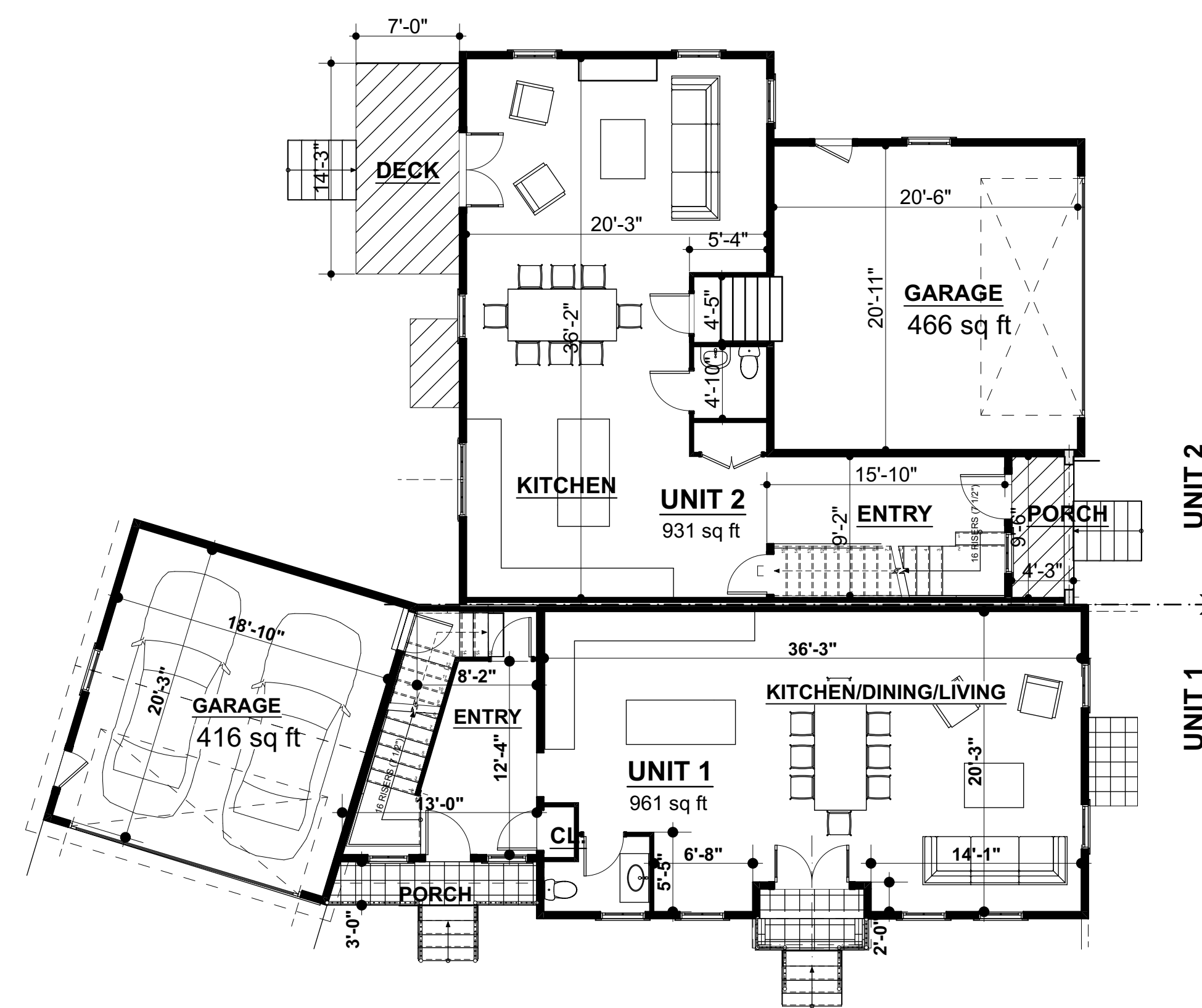
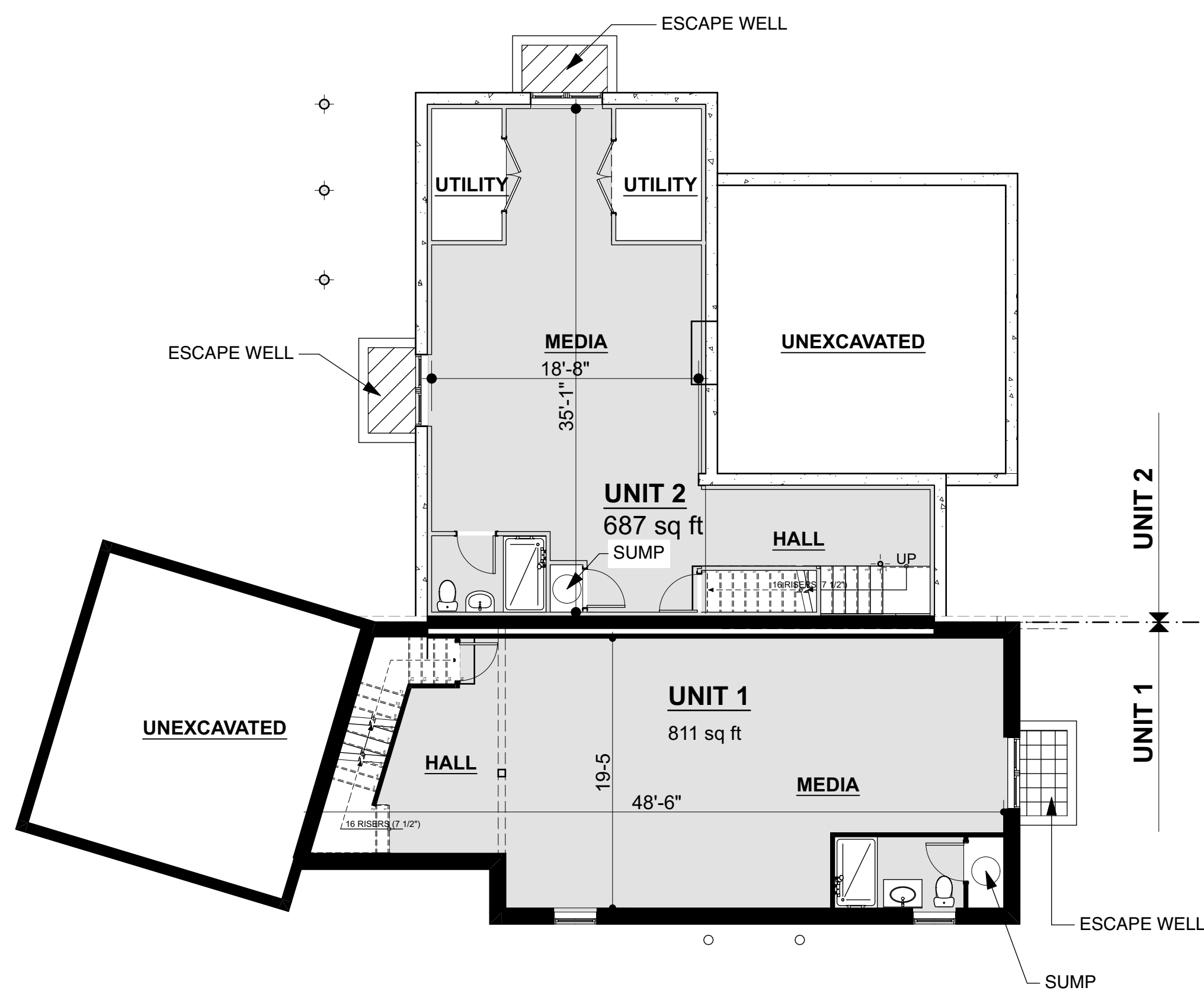
	UNIT 1	UNIT 2
BASEMENT	811 S.F.	687 S.F.
FIRST FLOOR	961 S.F.	931 S.F.
SECOND FLOOR	977 S.F.	1,005 S.F.
THIRD FLOOR	436 S.F.	443 S.F.
GARAGE	416 S.F.	466 S.F.

NOTE: FLOOR AREAS ARE IN SQUARE FEET, CALCULATED TO OUTSIDE FACE OF EXTERIOR WALLS AT FIRST & SECOND FLOORS, TO INSIDE OF KNEE WALL UNDER ROOF AT THIRD FLOOR, TO INSIDE FACE OF FOUNDATION WALL AT BASEMENT, TO INSIDE FACE OF DEMISING WALL. SQUARE FOOTAGES DO NOT INCLUDE MECHANICAL ROOMS.



I CERTIFY THAT THIS PLAN FULLY AND ACCURATELY DEPICTS THE LAYOUT, LOCATION, UNIT NUMBERS AND DIMENSIONS OF THE UNITS NUMBERED 1 THROUGH 2 INCLUSIVE, IN THE BUILDING 64 FULLER STREET, NEWTON, MASSACHUSETTS AS BUILT 7-4-2020. I FURTHER CERTIFY THAT THIS PLAN HAS BEEN PREPARED IN CONFORMITY WITH THE RULES AND REGULATIONS OF THE REGISTRAR OF DEEDS OF THE COMMONWEALTH OF MASSACHUSETTS. ALL DIMENSIONS AND AREAS SHOWN ARE APPROXIMATE.

PREPARED BY:
 MARK SANGIOLO, RA
 9 SKECHECONET WAY
 W. HARWICH, MA 617 272 5402



64 FULLER STREET CONDOMINIUM

64 FULLER STREET, NEWTON MA

JULY 4, 2020