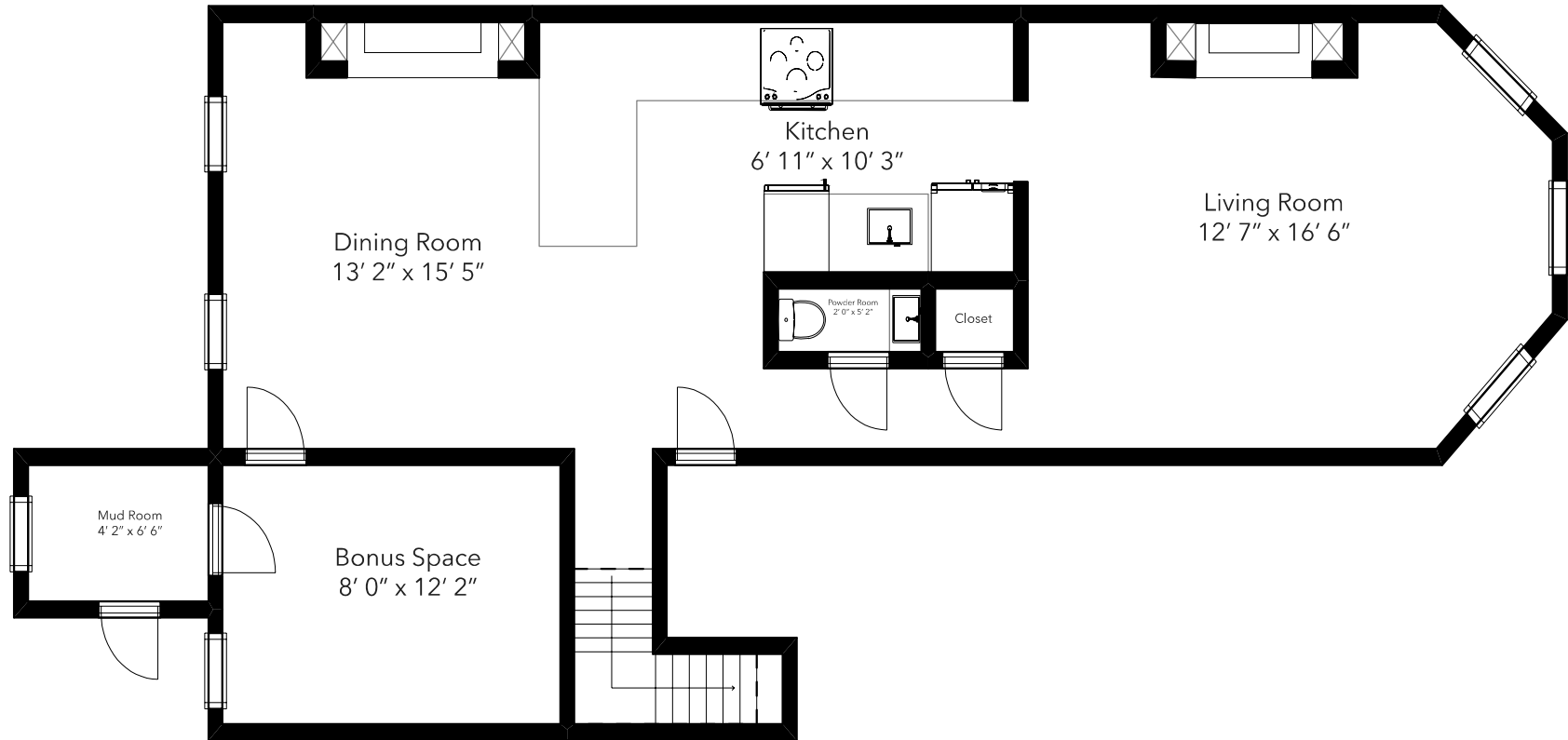


Address: 447 Marlborough St, Black Bay

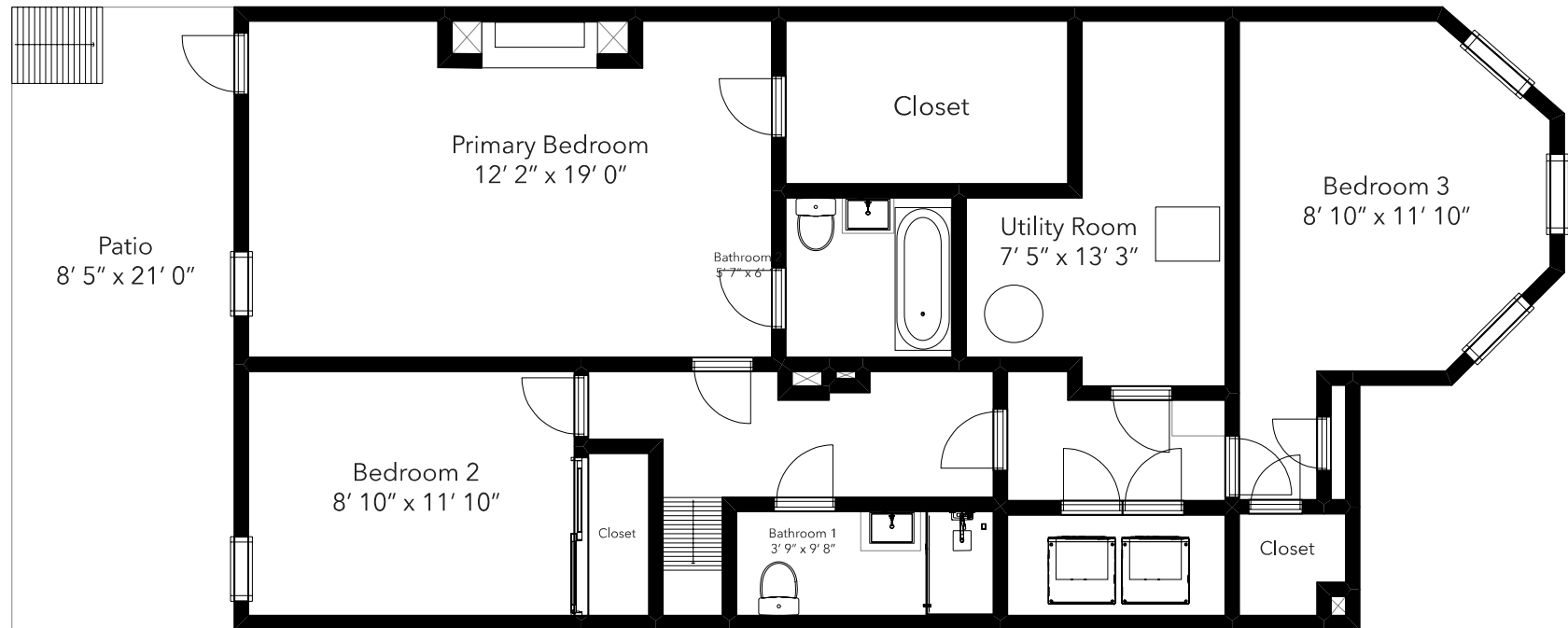
Floor Plan: First Level



Due to this being a post construction floor plan design, all dimensions are approximate, are measured using laser measures and measured from interior wall to interior wall of rooms. Joshua Allen Design is not responsible for any inaccuracies in calculated dimensions, square footage or layout.

Address: 447 Marlborough St, Black Bay

Floor Plan: Ground Level



Due to this being a post construction floor plan design, all dimensions are approximate, are measured using laser measures and measured from interior wall to interior wall of rooms. Joshua Allen Design is not responsible for any inaccuracies in calculated dimensions, square footage or layout.